

International business

Swedish owned enterprise groups having subsidiaries abroad 1997

Table 1
Number of groups having subsidiaries abroad and the number of employees in these groups by group size 1997, 1996, 1993, 1990 and 1987

Group size	Number of groups					Number of employees abroad				
	1997	1996	1993	1990	1987	1997	1996	1993	1990	1987
1-49	321	333	289	235	199	2 285	2 453	1 707	1 167	1 084
50-199	259	276	229	203	224	8 406	8 630	6 051	4 854	3 714
200-499	110	101	93	77	104	10 513	8 773	8 025	5 572	6 285
500-999	56	56	52	49	70	13 666	12 655	11 978	8 199	11 833
>1000	114	117	91	108	118	592 259	573 092	507 386	571 235	464 791
TOTAL	860	883	754	672	715	627 129	605 603	535 147	591 027	487 707
Number of employees in Sweden						667 046	703 142	605 172	713 247	747 341
Total number of employees						1 294 175	1 308 745	1 140 319	1 304 274	1 235 048

Note Foreign owned enterprise groups are included in the figures for 1987 (113 enterprise groups with 11 714 employees abroad), while the figures for 1990-1997 only cover Swedish owned enterprise groups.)

Swedish owned enterprise groups having subsidiaries abroad 1997

Contents

Table of contents	1
List of tables	2
Summary	3
Results of Survey	4
The largest manufacturing and service groups	7
Tables	9
Facts on survey	27
List of activities	29



Government authority with statistical responsibility in cooperation with Statistics Sweden

Swedish Institute for Growth Policy Studies, ITPS
Box 4, SE-831 21 Östersund
117 86 STOCKHOLM, SWEDEN
Facsimile: + 46 8 456 67 01
E-mail: anne-christine.strandell@itps.se
Contact: Anne-Christine Strandell

Statistics Sweden
Structural Business Statistics
SE- 701 89 ÖREBRO, SWEDEN
Facsimile: + 46 19 17 69 64
Email: lina.gustafsson@scb.se
Contact: Lina Gustafsson

List of tables

1.	Number of groups having subsidiaries abroad and the number of employees in these groups by group size 1997, 1996, 1993, 1990 and 1987	5
2.	Number of employees in Swedish owned enterprises abroad and in foreign owned enterprises in Sweden 1997	6
3.	Number of employees in Swedish owned groups having subsidiaries abroad by group size 1997	10
4.	Number of employees in all Swedish owned groups having subsidiaries abroad 1997 and 1996	12
5.	Number of employees in all Swedish owned groups having subsidiaries abroad 1993 and 1990	14
6.	Number of employees in Swedish owned groups having subsidiaries abroad by industry in Sweden 1997	16
7.	Number of employees in Swedish owned groups having subsidiaries abroad by industry in Sweden 1996	17
8.	Number of employees in Swedish owned groups having subsidiaries abroad by industry in Sweden 1993	18
9.	Number of employees in Swedish owned groups having subsidiaries abroad by industry in Sweden 1990	19
10.	Number of employees in Swedish owned groups having subsidiaries abroad 1997 by degree of internationalization	20
11.	Number of employees in the largest manufacturing groups 1997, 1996, 1995, 1994, 1993, 1990	22
12.	Number of employees in the largest service groups 1997, 1996, 1995, 1994, 1993, 1990	24
13.	Number of employees in the largest manufacturing groups 1997	26

Summary

The number of employees in Swedish owned enterprise groups having subsidiaries abroad decreased by more than 36 000 in Sweden while there was an increase by almost 22 000 abroad between 1996 and 1997. The expansion in Central and Eastern Europe continues. The number of employees increased abroad by more than 10 000 in the service sector and by nearly 7 000 in the manufacturing sector.

In 1997, the number of employees abroad in Swedish owned enterprise groups amounted to more than 627 000, which is the largest number of employees measured in these surveys. The share of the total number of employees that were employed abroad increased from 46 to 48 per cent. In 1987, the corresponding figure was 39 per cent.

Since 1993, the number of employees abroad has increased in almost all size classes.

The expansion in Central and Eastern Europe is unbroken throughout the 90s. In 1997, Swedish owned enterprise groups had 46 800 employees in this area. Still only seven per cent of the total number of employees abroad are employed in Central and Eastern Europe. Swedish owned enterprise groups also had 46 800 employees in subsidiaries in Asia, but more than 50 per cent of the number of employees abroad were employed within the European Union.

NUTEK, The Swedish Board for Industrial and Technical Development has, in cooperation with Statistics Sweden, surveyed the business activity abroad of the entire business sector in Sweden. The survey covers all enterprise groups having at least one subsidiary abroad in 1997.

Results of Survey

Swedish-owned enterprise groups dominate

Of the 1 164 enterprise groups with activities abroad 860 were Swedish-owned and 304 foreign-owned. The Swedish-owned enterprise groups had 1 294 175 employees of which 667 046 were situated in Sweden and the remaining 627 129 abroad. The 304 foreign-owned enterprise groups employed 319 627 of which 163 682 worked in Sweden and 155 945 abroad. The remainder of this Statistical Report will concentrate only on Swedish-owned enterprise groups.

Increasing number of employees abroad

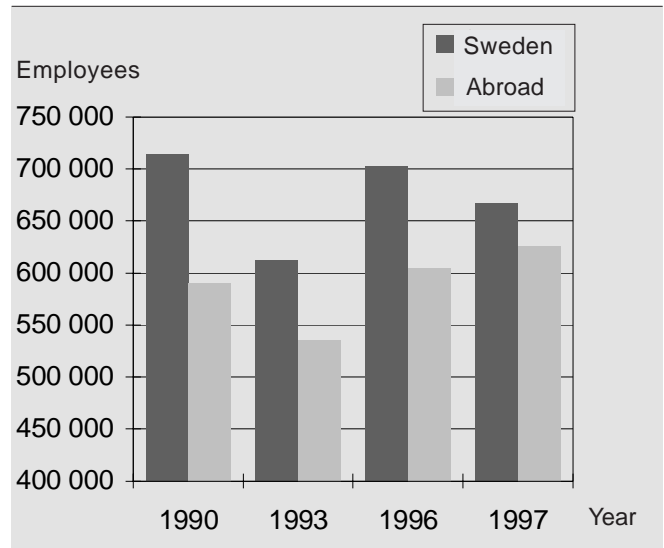
The number of employees working abroad in 1997 was the largest so far recorded. Between 1996 and 1997 there was an increase of 21 526 employees outside Swedish borders. At the same time the number of employees working within Sweden decreased by 36 096. This meant that the degree of internationalisation, i.e. number of employees abroad in relation to the total number of employees, increased from 46 per cent to 48 per cent. The degree of internationalisation in 1987 was 39 per cent. Between the years 1990 and 1993 the number of employees working in international enterprises fell sharply both in Sweden and abroad. However, the figure recovered in 1996 roughly to the level of 1990 (see figure 1).

The number of employees working abroad depends to a large degree on the number of enterprise groups that have an international presence. For this reason all data should be interpreted with caution. For example, if a large enterprise group established new activities abroad the number of employees in Sweden for enterprise groups with subsidiaries internationally would increase, since this enterprise group would previously not have been part of a survey. Enterprises that are no longer included in the survey for 1997 have disappeared mainly due to the fact they no longer have employees working abroad. In a few cases enterprises have disappeared from the survey due to a change of ownership from Swedish to foreign.

In 1997, manufacturing groups accounted for 77 per cent of the total number of employees working abroad, which is a reduction of 2 percentage points compared with the 1996 survey. Service groups accounted for 18 per cent of the total employed outside Sweden, up 1 percentage point. Of the remainder a large share worked within the construction industry.

Surveys have been carried out in 1987, 1990, 1993, 1996 and 1997. Between 1990 and 1993 the number of employees in international enterprises both inside and outside Sweden fell. This trend reversed between 1993 and 1996, and in 1996 the number of employees was at roughly the same level as in 1990. In 1997, the number employed in Sweden fell, but outside Sweden's borders it increased to the highest recorded level (see Table 1, page 5)

Figure 1
Number of employees in Sweden and abroad
1990, 1993, 1996 and 1997



Between 1990 and 1993, the enterprise groups that expanded employment abroad the most were those in the service sector with less than 1 000 employees. The largest enterprise groups scaled back employment abroad during the same period. Since 1993 companies in almost all categories have increased employment abroad. The service sector has continued its expansion in global markets.

Continued expansion in service sector

Swedish-owned enterprise groups in the manufacturing industry still have a larger number of employees employed outside Sweden's borders compared with other sectors of the economy. In 1997, 343 manufacturing groups (11 fewer than 1996) had 838 561 employees, of which 354 509 were in Sweden and 484 052 abroad. The degree of internationalisation was 58 per cent, somewhat higher than 1996. Between 1996 and 1997 the number of employees in this sector fell by a total of 15 378 persons. Employment in Sweden fell by 22 171 individuals while the number of employees abroad grew by 6 796.

However, during the whole of the 1990's the greatest expansion in employment abroad has occurred in Swedish owned service groups. Between 1990 and 1993, the number in this sector employed abroad rose a little over 20 per cent, and this expansion has continued. Although the number of enterprise groups fell in 1997 compared with 1996 (from 494 to 480), the number of employees employed abroad rose from 101 925 to 112 052, an increase of 10 127 persons. In 1997, the degree of internationalisation was just over 30 per cent.

Of total employment abroad in Swedish-owned enterprise groups in 1997, 18 per cent were in service groups. Manufacturing groups accounted for 77 per cent of employment in foreign countries and the remaining 5 per cent were active within other sectors, mainly construction.

Table 1

Number of groups having subsidiaries abroad and the number of employees in these groups by group size 1997, 1996, 1993, 1990 and 1987

Group size	Number of groups					Number of employees abroad				
	1997	1996	1993	1990	1987	1997	1996	1993	1990	1987
1-49	321	333	289	235	199	2 285	2 453	1 707	1 167	1 084
50-199	259	276	229	203	224	8 406	8 630	6 051	4 854	3 714
200-499	110	101	93	77	104	10 513	8 773	8 025	5 572	6 285
500-999	56	56	52	49	70	13 666	12 655	11 978	8 199	11 833
>1000	114	117	91	108	118	592 259	573 092	507 386	571 235	464 791
TOTAL	860	883	754	672	715	627 129	605 603	535 147	591 027	487 707
Number of employees in Sweden						667 046	703 142	605 172	713 247	747 341
Total number of employees						1 294 175	1 308 745	1 140 319	1 304 274	1 235 048

Note Foreign owned enterprise groups are included in the figures for 1987 (113 enterprise groups with 11 714 employees abroad), while the figures for 1990-1997 only cover Swedish owned enterprise groups.

Manufacturing groups continue to expand in Central and Eastern Europe, but fall in total

Between 1996 and 1997 the number of employees in Swedish-owned manufacturing groups in Europe fell by 1 per cent. The number employed in the European Union fell by 4 per cent while in Central and Eastern Europe employment rose by 35 per cent. Employment in the USA and Asia rose by 7 per cent and 8 per cent, respectively. As a whole the number of employees in manufacturing groups abroad decreased with a little over 1 per cent between 1996 and 1997.

A majority of employment abroad is still concentrated in Europe - 61 per cent of employees outside Sweden's borders in the manufacturing groups are in Europe. The USA accounts for 28 per cent of foreign employment while Asia accounts for 9 per cent.

The reduction in the number of employees employed in the EU countries between 1996 and 1997 can be attributed to the reduction of employment in Germany and the UK. In these countries the number employed fell by just under 6 000 and 3 000 persons, respectively. Other countries where employment fell relatively strongly were Spain and the Netherlands.

The country of location in which the manufacturing groups have the greatest number of employees is still the USA. In 1997 there were 87 598 employed in the USA, almost 7 000 more than in 1996. Despite the relatively large drop in employment in Germany and the UK, these countries continue to be second and third in the employment 'league table'. The expansion in Central and Eastern Europe is distributed among many countries, but the greatest expansion has occurred in the Czech Republic/Slovakia, and Poland. Poland has overtaken Estonia as the country of location with the greatest number of employees in the region. Thereafter follow the Czech Republic / Slovakia and Hungary.

The service groups mainly grow in Central and Eastern Europe

In 1997, 480 service groups (14 less than 1996) employed 372 348 individuals, of which 260 296 in Sweden and 112 052 abroad. This was an increase of 1 per cent in total (a 2.5 per cent reduction in Sweden and 10 per cent increase abroad) compared with 1996.

The service groups continue to expand and have increased employment globally. In Europe, the number of employees increased from 95 678 to 105 039. Thus, Europe is still the region in which the growth in employment in service groups remains strong. In 1997, 94 per cent of employees in the service groups employed abroad were in Europe. The service groups have also expanded in Central and Eastern Europe - the increase in employment between 1996 and 1997 was 33 per cent. The number of employees in the USA increased from 3 255 to 3 745 persons, while in Asia the increase was 1 479 to 2 057 persons. The share of employment in Asia of the total employed abroad in the service groups 1997 was almost 1.8 per cent.

The service groups largest country of location in 1997 was the UK, followed by Germany, Norway, Denmark and Finland. In Central and Eastern Europe the greatest expansion occurred in Russia (now with the largest number of employees in the region) followed by Poland and Hungary.

Expansion in both small and large enterprises

The expansion of employment in Swedish-owned enterprise groups between 1996 and 1997 has occurred in enterprises with more than 200 employees. The greatest expansion in percentage terms has taken place in firms with between 200-499 employees. In absolute terms the expansion of employment has occurred in enterprise groups with more than 1 000 employees.

The concentration of employment in a few large enterprise groups remains strong. In 1997, 20 large enterprise groups accounted for 62 per cent of total employment abroad.

Highly internationalised groups dominate

An alternative classification of internationalised enterprise groups is to classify them by degree of internationalisation, irrespective of size. 'Degree of internationalisation' refers to the share of employment abroad in relation to total employment in the enterprise group. In 1997, 235 enterprise groups had more than 50 per cent of all employees employed outside Sweden. These enterprise groups accounted for 83 per cent of all employment abroad and the average degree of internationalisation was 73 per cent. There were 351 enterprise groups with less than 20 per cent of employment outside Sweden, which accounted for 3 per cent of total employment abroad and an average degree of internationalisation of 6 per cent. The remaining 274 enterprise groups had between 20-50 per cent of employees working abroad. These accounted for 14 per cent of total employment abroad and had an average degree of internationalisation of 36 per cent.

Swedish ownership abroad twice as large as foreign ownership in Sweden

Between 1996 and 1997, the growth of employment outside Sweden in Swedish-owned enterprise groups coincided with an expansion of employment in foreign-owned enterprises within Sweden. In 1997, foreign-owned companies employed 301 069 individuals in Sweden, a little over 23 000 more than in 1996. However, in absolute terms Swedish-owned enterprises still employ twice as many employees outside Sweden than foreign-owned enterprises do within Sweden. Of the 15 countries in which Swedish-owned enterprise groups have the largest number of employees, 11 are the largest investors within Sweden (see table 2). The countries in which Swedish-owned enterprise groups have the largest number of employees is virtually the same in 1997 as in 1996, with the exception that India has taken over from Canada. The situation is similar for those countries

Table 2

Number of employees in Swedish owned enterprises abroad and in foreign owned enterprises in Sweden 1997

Countries where Swedish owned groups have the largest no. of employees	No. of employees in subsidiaries of Swedish owned groups	Largest investing countries in Sweden	No. of employees in foreign owned enterprises in Sweden
USA	94 837	USA	51 138
Germany	71 724	Netherlands	34 905
UK	55 286	Switzerland	34 425
France	38 422	Finland	33 685
Denmark	33 276	UK	32 865
Italy	33 058	Denmark	30 020
Norway	28 544	Norway	28 856
Finland	24 538	France	21 732
Spain	19 616	Germany	17 467
Belgium / Lux.	19 081	Japan	3 415
Brazil	18 426	Cyprus	2 419
Netherlands	18 104	Austria	2 003
Poland	11 133	Belgium / Lux.	1 740
Austria	9 939	Saudi Arabia	1 035
Canada	9 865	Italy	841
Other countries	141 280	Other countries	4 523
TOTAL	627 129	TOTAL	301 069

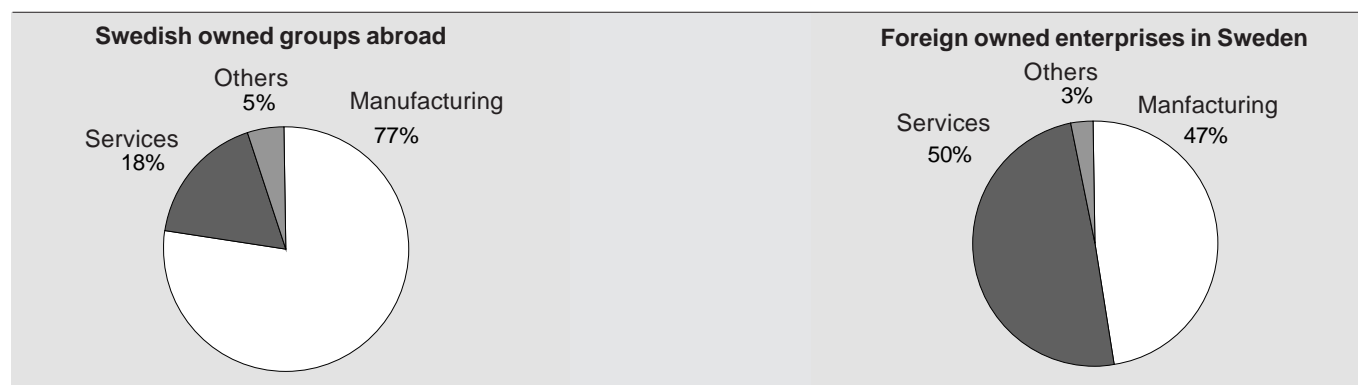
with the greatest amount of investment in Sweden, where the only change is that Saudi Arabia has replaced Kuwait.

Of the large investment countries, only Switzerland, Norway, the Netherlands, Finland, Cyprus and Saudi Arabia have more employees in subsidiaries in Sweden than Swedish-owned enterprise groups have in subsidiaries in each respective country.

For a long time, the international activities of Swedish-owned enterprises have been dominated by manufacturing groups. On the other hand, foreign-owned enterprises in Sweden have had a large share of employment in service groups. Of all employment abroad in Swedish-owned enterprise groups, the manufacturing group accounts for a 77 per cent share. For foreign-owned enterprises in Sweden, only 47 per cent of employment is found in the mining and manufacturing industry (see figure 2).

Figure 2

Number of employees in Swedish owned groups abroad and in foreign owned enterprises in Sweden 1997 by industry



The largest manufacturing and service groups

The previous section covered all Swedish-owned enterprise groups with subsidiaries abroad. Since the number of employees working abroad is concentrated to the largest enterprise groups, a good understanding of employment trends can be gained by studying a number of the largest enterprise groups. Since 1979, the 80 largest manufacturing groups have been subjected to special surveys, and since 1990 the same has been done with the 40 largest service groups ('largest', the enterprise groups with the largest number of employees working abroad). Since the 'normal' surveys began, the 80 and 40 largest enterprise groups in the manufacturing and service groups in terms of number of employees abroad have been singled out every third year for further study. These two groups have thereafter been studied separately during a three-year period. Since 1996, however, an annual, extensive survey of both larger and smaller enterprise groups has been carried out. Enterprise groups that become foreign-owned are excluded. Also, in the case where large reorganisations have taken place, much effort is expended to ensure that coverage is as uniform as possible. This method means, that the groups do not contain the same enterprise groups from year to year, which in turn means that the data is not directly comparable.

The 80 largest manufacturing groups accounted in 1997 for 98 per cent of all employment abroad in Swedish-owned manufacturing groups, while in the service groups the comparable figure was 90 per cent. In relation to the whole of the Swedish business sector, the manufacturing and service groups together accounted for 92 per cent of all employment abroad, of which the manufacturing groups accounted for 75.5 per cent and the service groups for 16.1 per cent.

In 1997, the 80 largest manufacturing groups had 749 083 employees, of which 275 556 were employed in Sweden and 473 527 abroad. The degree of interna-

tionalisation was 63 per cent. The 40 largest service groups had 222 904 employees, of which 100 812 in Sweden. The degree of internationalisation was 45 per cent.

The manufacturing groups that are not among the 80 largest have most of their operations concentrated in Europe, i.e. 88 per cent. Among the 80 largest manufacturing groups the comparable figure was 60 per cent.

The 20 largest manufacturing groups, which are recorded separately in table 13, had a total of 574 868 employees. Of these, 185 164 were employed in Sweden and the remaining 389 704 abroad. The 20 largest manufacturing groups accounted for 81 per cent of all employees employed abroad in Swedish-owned manufacturing groups in 1997, and 62 per cent of all employees working abroad in Swedish-owned enterprise groups.

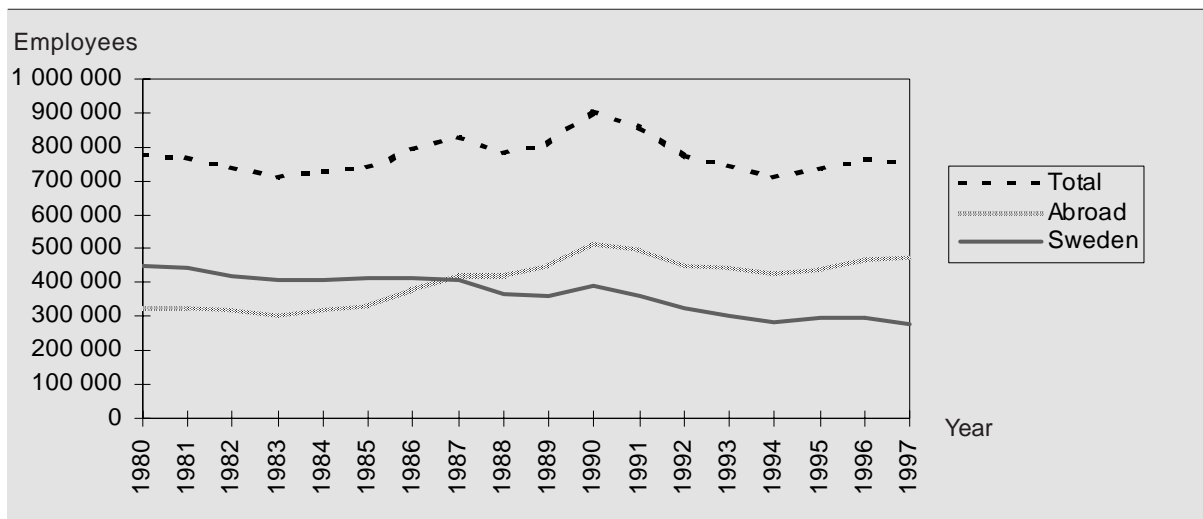
Besides the studies of employment trends among the 20 largest manufacturing groups, further studies have been carried out in other areas, i.e. sales, investment and R&D. Such a study covering 1993-1996 was presented in "Swedish-owned enterprises having subsidiaries abroad 1993-1996".

Increased internationalisation in the 1980's and 1990's

Between 1983 and 1990 the number of employees working abroad increased every year in the 80 largest manufacturing groups. After 1990 this trend reversed and a reduction occurred until 1994, before the trend once again reversed and began to increase again from 1995. Since 1995 this latest trend has remained intact. Concurrently, the number employed within Sweden has trended downwards during the whole period, which has meant that that the manufacturing groups have become progressively more internationalised. The development between 1980 and 1997 is shown in figure 3.

Figure 3

Number of employees in the 80 largest Swedish manufacturing groups having subsidiaries abroad 1980-1997



Manufacturing groups continue to expand

Since the 80 largest manufacturing groups account for a very large share (98 per cent) of employees working abroad in Swedish owned manufacturing groups, the 80 largest manufacturing groups also dominate all activities abroad. An annual survey of these enterprise groups thus gives us a good understanding of all activities of the whole business sector abroad.

Between 1996 and 1997 the number of employees employed abroad in the 80 largest manufacturing groups increased by almost 6 000 persons. The increase in Central and Eastern Europe was the greatest, with 8 000 new employees. In 1990 the number employed by the 80 largest manufacturing groups in this region was 272. Thereafter a constant and large expansion has taken place and in 1997 the number employed was 31 188. The development in this region is shown in figure 4. The share of employment in Central and Eastern Europe was 7 per cent in 1997.

Expanding service sector

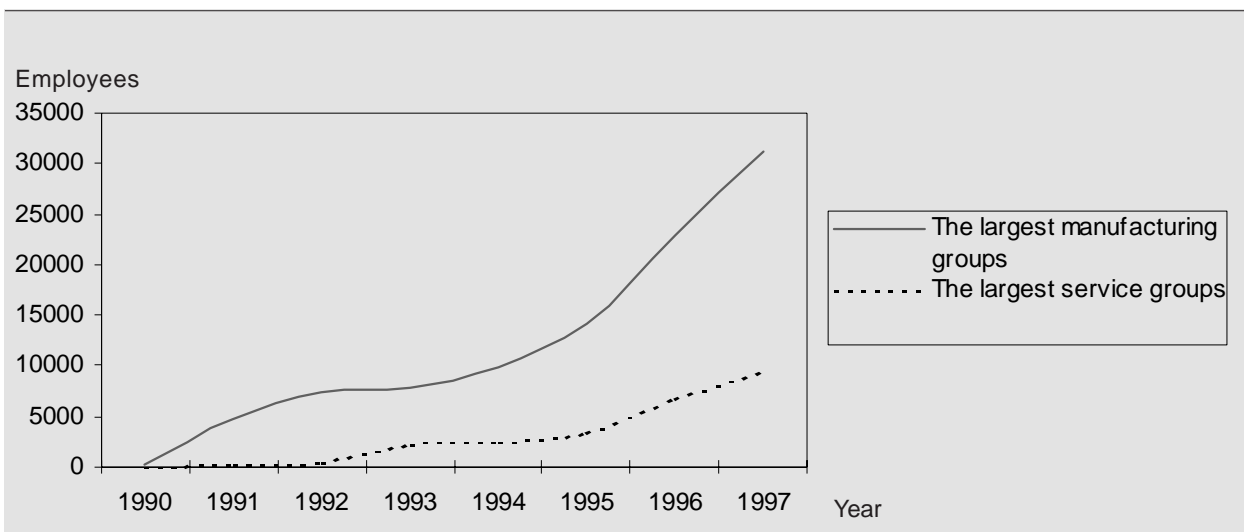
Between 1996 and 1997, the 40 largest service groups increased their employment abroad by 11 per cent. As with the 80 largest manufacturing groups, the growth in employment abroad was particularly noticeable in Central and Eastern Europe, i.e. a 41 per cent growth between 1996 and 1997. The trend between 1990 and 1997 is shown in figure 4. In the service groups, the number employed in Central and Eastern Europe was greater than in the USA and Asia together. In 1997, 9 per cent of employees working abroad in the 40 largest service

groups were situated in Central and Eastern Europe. In the USA and Asia the figures were 3 per cent and 2 per cent respectively.

The smaller service groups have a relatively larger share of employment outside of Europe compared with the largest service groups. In the 40 largest service groups, 95 per cent of employees working abroad were situated within Europe. However, the total number of employees working abroad in the smaller service groups is only just below 11 000. Of these, 16 per cent were situated in Central and Eastern Europe.

Figure 4

Number of employees in Central and Eastern Europe in the largest Swedish manufacturing and service groups having subsidiaries abroad 1990-1997



Tables

--	--

Table 3

Number of employees in Swedish owned groups having subsidiaries abroad by group size 1997

Country of location	Group size (total number of employees)						
	Total	1-49	50-249	250-499	500-999	1000-4999	5000-
EUROPE	417 532	1 862	8 264	7 300	10 908	47 185	342 013
Whereof							
EU15 (excl. Sweden)	334 570	866	4 219	4 084	7 114	33 586	284 701
Germany	71 724	147	607	759	1 135	6 936	62 140
UK	55 286	168	834	943	1 642	5 165	46 534
France	38 422	60	367	443	650	4 587	32 315
Denmark	33 276	172	668	607	952	8 782	22 095
Italy	33 058	5	34	157	327	677	31 858
Finland	24 538	227	753	477	611	3 659	18 811
Spain	19 616	32	64	33	126	812	18 549
Belgium / Luxembourg	19 081	15	169	226	1 081	1 266	16 324
Netherlands	18 104	17	226	230	505	777	16 349
Austria	9 939	0	5	67	58	475	9 334
Portugal	8 071	17	422	0	17	296	7 319
Ireland	2 683	6	70	142	10	150	2 305
Greece	772	0	0	0	0	4	768
Whereof							
Central- and Eastern Europe	46 766	509	2 873	2 609	2 100	6 375	32 300
Poland	11 133	239	1 505	702	180	1 785	6 722
Estonia	8 284	100	603	832	37	417	6 295
Hungary	7 889	55	46	536	37	34	7 181
Czech Republic / Slovakia	6 601	17	79	28	350	130	5 997
Russia	5 856	12	21	23	48	2 611	3 141
Latvia	3 149	34	611	189	1 440	346	529
Lithuania	841	8	4	0	8	358	463
Whereof							
Other Europe	36 196	487	1 172	607	1 694	7 224	25 012
Norway	28 544	350	911	581	1 538	6 563	18 601
Switzerland	5 266	12	26	15	68	491	4 654
AMERICA	143 575	273	892	1 263	3 245	7 848	130 054
USA	94 837	256	820	1 198	2 368	6 879	83 316
Brazil	18 426	1	4	20	13	27	18 361
Canada	9 865	4	52	43	130	664	8 972
Mexico	6 324	0	12	0	0	58	6 254
Argentina	3 320	0	0	0	0	123	3 197
ASIA	45 811	57	227	146	913	734	43 734
China	8 847	1	18	0	40	172	8616
India	8 338	0	9	0	60	93	8 176
Thailand	5 452	0	1	0	0	1	5 450
Japan	4 513	5	19	35	74	203	4 177
Indonesia	4 323	0	0	0	0	0	4 323
Malaysia	3 407	0	61	69	62	19	3 196
Philippines	2 332	0	0	0	500	2	1 830

Table 3 (continues)

Number of employees in Swedish owned groups having subsidiaries abroad by group size 1997

Country of location	Group size (total number of employees)						
	Total	1-49	50-249	250-499	500-999	1000-4999	5000-
Singapore	1 605	5	57	23	71	73	1 376
Hong Kong	1 215	9	4	19	60	82	1 041
Taiwan	989	6	4	0	32	6	941
South Korea	754	0	8	0	4	18	724
Saudi Arabia	106	0	0	0	0	0	106
AFRICA	10 809	2	138	1	2	1 226	9 440
South Africa	3 068	0	23	1	2	76	2 966
Tanzania	188	0	1	0	0	0	187
Zimbabwe	178	1	0	0	0	0	177
OCEANIA	8 859	1	35	18	36	255	8 514
Australia	7 716	1	29	18	36	255	7 377
New Zealand	1 119	0	6	0	0	0	1 113
ABROAD	627 129	2 285	10 084	8 838	13 666	57 535	534 724
SWEDEN	667 046	4 780	22 433	18 731	27 200	83 263	510 639
Total number of employees	1 294 175	7 065	32 517	27 569	40 866	140 798	1 045 363
Number of groups	860	321	290	79	56	58	56

Table 4

Number of employees in all Swedish owned groups having subsidiaries abroad 1997 and 1996

Country of location	Total business sector ¹⁾		Manufacturing ²⁾		Services ³⁾	
	1997	1996	1997	1996	1997	1996
EUROPE	417 532	407 068	294 134	296 940	105 039	95 678
Whereof						
EU15 (excl. Sweden)	334 570	338 706	245 149	255 066	77 479	73 456
Germany	71 724	75 786	54 838	60 501	13 911	12 211
UK	55 286	58 097	40 595	43 568	14 510	14 352
France	38 422	36 731	30 852	31 425	7 561	5 201
Denmark	33 276	29 418	16 978	17 697	10 972	8 178
Italy	33 058	32 641	32 616	32 147	442	494
Finland	24 538	25 009	11 650	10 392	9 539	11 686
Spain	19 616	20 855	11 480	12 674	8 107	8 138
Belgium / Luxembourg	19 081	19 093	17 490	17 514	1 546	1 554
Netherlands	18 104	19 264	15 231	15 869	2 850	3 224
Austria	9 939	9 911	8 144	8 217	1 795	1 602
Portugal	8 071	8 472	2 195	2 195	5 876	6 261
Ireland	2 683	2 655	2 308	2 185	370	463
Greece	772	774	772	682	0	92
Whereof						
Central- and Eastern Europe	46 766	34 549	33 251	24 692	11 163	8 400
Poland	11 133	8 824	7 867	6 222	2 791	2 443
Estonia	8 284	7 401	6 784	6 277	1 386	1 001
Hungary	7 889	7 094	6 338	6 017	1 545	1 032
Czech Republic / Slovakia	6 601	2 778	6 417	2 618	181	106
Russia	5 856	4 290	2 107	1 979	2 914	1 500
Latvia	3 149	2 510	2 016	967	1 061	1 394
Lithuania	841	848	352	125	484	622
Whereof						
Other Europe	36 196	33 813	15 734	17 182	16 397	13 822
Norway	28 544	27 464	10 969	12 924	13 630	11 808
Switzerland	5 266	4 949	3 554	3 359	1 712	1 575
AMERICA	143 575	133 169	134 306	125 490	3 745	3 255
USA	94 837	86 643	87 598	80 816	3 501	2 777
Brazil	18 426	19 564	18 381	19 530	45	34
Canada	9 865	8 253	9 828	8 219	37	34
Mexico	6 324	6 708	6 311	6 708	13	0
Argentina	3 320	3 244	3 319	3 243	1	1
ASIA	45 811	43 453	41 956	38 811	2 057	1 479
China	8 847	7 315	8 673	7 256	174	59
India	8 338	9 553	8 251	7 595	71	28
Thailand	5 452	5 396	5 406	5 171	46	86
Japan	4 513	4 488	4 408	4 385	105	103
Indonesia	4 323	3 759	4 310	3 738	13	21
Malaysia	3407	3 781	3325	3 750	82	21
Philippines	2 332	1 865	1 815	1 852	517	13

Table 4 (continues)

Number of employees in all Swedish owned groups having subsidiaries abroad 1997 and 1996

Country of location	Total business sector ¹⁾		Manufacturing ²⁾		Services ³⁾	
	1997	1996	1997	1996	1997	1996
Singapore	1 605	1 558	1 306	1 226	299	332
Hong Kong	1 215	1 479	817	767	398	553
Taiwan	989	903	979	891	10	11
South Korea	754	795	729	789	25	6
Saudi Arabia	106	135	16	75	52	0
AFRICA	10 809	9 463	5 477	5 185	34	40
South Africa	3 068	2 847	3 067	2 845	1	2
Tanzania	188	1 422	187	190	1	0
Zimbabwe	178	992	176	156	1	1
OCEANIA	8 859	9 246	8 616	9 030	243	216
Australia	7 716	7 907	7 487	7 691	229	216
New Zealand	1 119	1 111	1 105	1 111	14	0
ABROAD	627 129	605 603	484 049	477 256	112 052	101 925
SWEDEN	667 046	703 142	354 509	376 680	260 296	266 858
Total number of employees	1 294 175	1 308 745	838 558	853 936	372 348	368 783
Number of groups	860	883	342	354	481	494

1) In the total business sector are included, besides manufacturing and services, groups that are active in agriculture and forestry (NACE REV.1 01-05), electricity, gas and water supply (NACE REV.1 40-41) and construction (NACE REV.1 45).

2) The manufacturing groups refer to NACE REV.1 10-37 according to NACE REV.192.

3) The service groups refer to NACE REV.1 50-99 according to NACE REV.192.

Table 5

Number of employees in all Swedish owned groups having subsidiaries abroad 1993 och 1990

Country of location	Total business sector ¹⁾		Manufacturing ²⁾		Services ³⁾	
	1993	1990	1993	1990	1993	1990
EUROPE	354 469	381 291	291 840	326 718	59 745	47 743
Whereof						
EU15 (excl. Sweden)	315 013	350 288	281 022	307 098	45 594	37 441
Germany	67 348	72 331	58 678	61 353	8 647	10 504
UK	62 123	78 108	52 932	72 837	8 290	5 134
France	35 175	36 078	31 054	34 582	4 113	1 459
Denmark	34 980	39 436	34 747	38 461	215	975
Italy	27 062	32 852	20 261	22 861	6 026	6 584
Finland	20 067	18 468	14 163	17 332	5 842	1 060
Spain	19 823	19 127	31 005	16 330	2 458	2 595
Belgium / Luxembourg	17 286	17 674	16 386	16 168	867	1 409
Netherlands	12 774	15 887	7 492	12 519	5 109	2 249
Austria	7 687	8 183	6 964	7 432	723	748
Portugal	7 248	8 847	4 026	4 339	3 185	4 315
Ireland	2 610	2 701	2 485	2 292	119	405
Greece	830	596	829	592	0	4
Whereof						
Central- and Eastern Europ	11 374	651	8 339	272	2 964	265
Poland	5 824	197	5 190	150	614	8
Estonia	2 028	220	1 097	25	907	194
Hungary	1 330	34	1 295	32	35	0
Czech Republic / Slovakia	824	0	106	0	710	0
Russia	736	0	323	0	405	0
Latvia	389	0	128	0	250	0
Lithuania	33	0	22	0	11	0
Whereof						
Other Europe	28 082	30 352	2 479	19 348	11 187	10 037
Norway	22 009	24 119	11 632	13 991	9 719	9 226
Switzerland	5 464	5 439	4 049	4 626	1 415	808
AMERICA	131 857	155 359	127 031	148 001	2 984	5 947
USA	84 063	92 575	79 917	86 973	2 781	4 519
Brazil	18 481	25 116	18 350	24 696	131	360
Canada	9 742	10 279	9 742	10 255	0	24
Mexico	7 473	10 108	7 419	9 075	54	1 032
Argentina	3 263	6 924	3 262	6 917	1	7
ASIA	34 412	38 075	30 989	36 253	784	697
India	8 128	7 525	5 754	7 101	59	30
Malaysia	4 562	4 420	4 557	4 417	0	2
Thailand	4 362	5 897	4 358	5 895	3	0
Japan	4 231	4 658	4 197	4 610	30	48
Philippines	3 394	2 687	3 393	2 687	0	0
Indonesia	2 587	2 188	2 585	2 171	2	0
Singapore	1 417	2 638	1 310	2 364	107	166

Table 5 (continues)

Number of employees in all Swedish owned groups having subsidiaries abroad 1993 och 1990

Country of location	Total business sector ¹⁾		Manufacturing ²⁾		Services ³⁾	
	1993	1990	1993	1990	1993	1990
Hong Kong	1 176	2 868	901	2 316	247	363
Saudi Arabia	1 151	1 006	1 019	952	105	35
Taiwan	1 030	1 403	1 029	1 398	1	1
South Korea	614	782	614	776	0	0
China	477	85	477	68	0	0
AFRICA	4 017	5 144	2 789	3 334	63	90
South Africa	1 105	1 628	1 105	1 628	0	0
Tanzania	913	1 264	246	270	2	17
Zimbabwe	316	186	148	161	0	20
OCEANIA	8 160	9 809	7 978	9 751	182	57
Australia	7 394	8 280	7 218	8 229	176	50
New Zealand	742	1 495	736	1 488	6	7
ABROAD	535 147	591 027	462 146	524 381	67 957	55 437
SWEDEN	605 172	713 247	379 540	443 875	175 423	174 126
Total number of employees	1140 319	1304 274	841 686	968 256	243 380	229 563
Number of groups	754	672	333	320	386	317

1) In the total business sector are included, besides the manufacturing and services, groups that are active in agriculture and forestry (NACE REV.1 01-05), electricity, gas and water supply (NACE REV.1 40-41) and construction (NACE REV.1 45).

2) The manufacturing groups refer to NACE REV.1 10-37 according to NACE REV.192.

3) The service groups refer to NACE REV.1 50-99 according to NACE REV.192.

Table 6
Number of employees in Swedish owned groups having subsidiaries abroad by industry in Sweden 1997

Industry	NACE	Total		Abroad		Sweden		Degree of internationalisation (%)
	Rev.1 Activity code	No. of groups	No. of employees	No. of employees	Share of employees (%)	No. of employees	Share of employees (%)	
Agriculture, forestry, fishing electricity, gas, water supply	01-05, 40-41	6	8 385	542	0,1	7 843	1,2	6,5
Mining, manufacturing	10-37	342	838 558	484 049	77,2	354 509	52,1	57,7
Mining and quarrying	10-14	1	3 524	339	0,1	3 185	0,5	9,6
Food, beverages and tobacco	15-16	12	25 697	7 768	1,2	17 929	2,7	30,2
Textiles	17-19	26	12 436	8 433	1,3	4 003	0,6	67,8
Wood and wood products	20	18	8 481	2 527	0,4	5 954	0,9	29,8
Pulp, paper	21	13	96 257	54 125	8,6	42 132	6,3	56,2
Publishing, printing	22	21	25 545	13 221	2,1	12 324	1,8	51,8
Chemicals, petroleum	23-24	19	38 172	27 818	4,4	10 354	1,6	72,9
Rubber, plastic products	25	17	26 817	14 617	2,3	12 200	1,8	54,5
Non-metallic mineral products	26	8	16 231	10 524	1,7	5 707	0,9	64,8
Basic metal industries	27	7	51 846	26 358	4,2	25 488	3,8	50,8
Fabricated metal products	28	34	49 126	15 100	2,4	34 026	5,1	30,7
Machinery	29	73	234 870	181 087	28,9	53 783	8,1	77,1
Office machinery	30	5	1 117	402	0,1	715	0,1	36,0
Other electrical machinery	31	18	3 829	1 523	0,2	2 306	0,3	39,8
Radio, television, communication equipment	32	7	97 507	55 558	8,9	41 949	6,3	57,0
Instruments	33	29	24 728	20 022	3,2	4 706	0,7	81,0
Motor vehicles	34	15	108 505	42 692	6,8	65 813	9,9	39,3
Other transport equipment	35	4	8 842	592	0,1	8 250	1,2	6,7
Other manufacturing	36-37	15	5 028	1 343	0,2	3 685	0,6	26,7
Construction	45	20	72 874	28 548	4,6	44 326	6,6	39,2
Service sector	50-99	481	372 348	112 052	17,9	260 296	40,1	30,1
Sales of motor vehicles	50	10	7 377	2 498	0,4	4 879	0,7	33,9
Wholesale trade	51	218	30 984	11 026	1,8	19 958	3,0	35,6
Retail trade	52	32	43 858	11 884	1,9	31 974	4,8	27,1
Hotels and restaurants	55	6	5 437	2 384	0,4	3 053	0,5	43,8
Land transport	60	10	22 065	1 966	0,3	20 099	3,0	8,9
Sea and air transport	61-62	15	15 155	8 372	1,3	6 783	1,0	55,2
Supporting transport, travel agencies	63	18	22 827	11 879	1,9	10 948	1,6	52,0
Post, telecommunications	64	5	78 102	3 577	0,6	74 525	11,2	4,6
Financial services	65-67	18	55 108	8 944	1,4	46 164	6,9	16,2
Real estate	70	13	2 743	586	0,1	2 157	0,3	21,4
Renting companies	71	3	249	109	0,0	140	0,0	43,8
Data consultancy	72	45	16 761	4 113	0,7	12 648	1,9	24,5
Research and development	73	11	831	583	0,1	248	0,0	70,2
Other business services	74	61	60 651	41 566	6,6	19 085	2,9	68,5
Other services	75-99	16	10 200	2 565	0,4	7 635	1,1	25,1
Unknown industry	unknown	11	2 010	1 938	0,3	72	0,0	96,4
TOTAL		860	1 294 175	627 129	100,0	667 046	100,0	48,5

Note Degree of internationalisation = Number of employees abroad in per cent of total number of employees.

Table 7

Number of employees in Swedish owned groups having subsidiaries abroad by industry in Sweden 1996

Industry	NACE Rev.1 Activity code	Total		Abroad		Sweden		Degree of internatio- nalisation (%)
		No. of groups	No. of employees	No. of employees	Share of employ- ees (%)	No. of employees	Share of employ- ees (%)	
Agriculture, forestry, fishing electricity, gas, water supply	01-05, 40-41	7	8 653	707	0,1	7 946	1,1	8,2
Mining, manufacturing	10-37	354	853 936	477 256	78,8	376 680	53,6	55,9
Mining and quarrying	10-14	3	3 538	317	0,1	3 221	0,5	9,0
Food, beverages and tobacco	15-16	12	23 616	8 773	1,4	14 843	2,1	37,1
Textiles	17-19	25	10 877	7 167	1,2	3 710	0,5	65,9
Wood and wood products	20	32	14 241	5 260	0,9	8 981	1,3	36,9
Pulp, paper	21	14	96 181	50 672	8,4	45 509	6,5	52,7
Publishing, printing	22	23	29 794	16 056	2,7	13 738	2,0	53,9
Chemicals, petroleum	23-24	16	34 565	24 780	4,1	9 785	1,4	71,7
Rubber, plastic products	25	18	27 757	13 329	2,2	14 428	2,1	48,0
Non-metallic mineral products	26	9	14 627	8 704	1,4	5 923	0,8	59,5
Basic metal industries	27	11	56 805	28 693	4,7	28 112	4,0	50,5
Fabricated metal products	28	30	48 551	13 307	2,2	35 244	5,0	27,4
Machinery	29	68	240 768	189 622	31,3	51 146	7,3	78,8
Office machinery	30	5	5 011	2 498	0,4	2 513	0,4	49,9
Other electrical machinery	31	21	6 158	1 456	0,2	4 702	0,7	23,6
Radio, television, communi- cation equipment	32	7	91 199	49 917	8,2	41 282	5,9	54,7
Instruments	33	22	9 620	5 924	1,0	3 696	0,5	61,6
Motor vehicles	34	15	114 572	47 839	7,9	66 733	9,5	41,8
Other transport equipment	35	6	21 144	1 998	0,3	19 146	2,7	9,4
Other manufacturing	36-37	17	4 912	944	0,2	3 968	0,6	19,2
Construction	45	17	76 966	25 434	4,2	51 532	7,3	33,0
Service sector	50-99	494	368 783	101 925	16,8	266 858	38,0	27,6
Sales of motor vehicles	50	14	6 483	1 987	0,3	4 496	0,6	30,6
Wholesale trade	51	216	32 521	11 569	1,9	20 952	3,0	35,6
Retail trade	52	34	47 354	10 238	1,7	37 116	5,3	21,6
Hotels and restaurants	55	12	10 199	5 537	0,9	4 662	0,7	54,3
Land transport	60	8	23 547	1 776	0,3	21 771	3,1	7,5
Sea and air transport	61-62	13	15 112	8 771	1,4	6 341	0,9	58,0
Supporting transport, travel agencies	63	22	24 021	11 610	1,9	12 411	1,8	48,3
Post, telecommunications	64	3	79 939	2 775	0,5	77 164	11,0	3,5
Financial services	65-67	24	58 081	8 384	1,4	49 697	7,1	14,4
Real estate	70	14	3 021	884	0,1	2 137	0,3	29,3
Renting companies	71	7	609	67	0,0	542	0,1	11,0
Data consultancy	72	37	9 683	1 933	0,3	7 750	1,1	20,0
Research and development	73	4	388	263	0,0	125	0,0	67,8
Other business services	74	73	53 911	35 674	5,9	18 237	2,6	66,2
Other services	75-99	13	3 914	457	0,1	3 457	0,5	11,7
Unknown industry	unknown	11	407	281	0,0	126	0,0	69,0
TOTAL		883	1 308 745	605 603	100,0	703 142	100,0	46,3

Note Degree of internationalisation = Number of employees abroad in per cent of total number of employees.

Table 8
Number of employees in Swedish owned groups having subsidiaries abroad by industry in Sweden 1993

Industry	NACE Rev.1 Activity code	Total		Abroad		Sweden		Degree of internationalisation (%)
		No. of groups	No. of employees	No. of employees	Share of employees (%)	No. of employees	Share of employees (%)	
Agriculture, forestry, fishing electricity, gas, water supply	01-14, 40-41	6	13 566	547	0,1	13 019	2,2	4
Manufacturing industry	15-37	331 0	830 972	458 257	85,6	372 715	62,0	55
Food, beverages and tobacco	15-16	9	15 374	1 888	0,4	13 486	2,2	12
Textiles	17-19	23	4 682	1 864	0,3	2 818	0,5	40
Wood and wood products	20	17	7 908	3 270	0,6	4 638	0,8	41
Pulp, paper	21	17	117 596	54 903	10,3	62 693	10,4	47
Publishing, printing	22	18	29 249	16 131	3,0	13 118	2,2	55
Chemicals, petroleum	23-24	20	58 830	44 608	8,3	14 222	2,4	76
Rubber, plastic products	25	15	12 612	6 517	1,2	6 095	1,0	52
Non-metallic mineral products	26	15	18 600	10 744	2,0	7 856	1,3	58
Basic metal industries	27	10	52 214	25 600	4,8	26 614	4,4	49
Fabricated metal products	28	33	62 134	18 323	3,4	43 811	7,2	29
Machinery, office machinery, computers	29-30	74	235 130	175 448	32,8	59 682	9,9	75
Other electrical machinery	31	14	4 652	905	0,2	3 747	0,6	19
Radio, television communi- cation equipment	32	4	67 284	37 037	6,9	30 247	5,0	55
Instruments	33	22	21 131	15 917	3,0	5 214	0,9	75
Motor vehicles	34	15	116 602	42 917	8,0	73 685	12,2	37
Other transport equipment	35	4	1 000	141	0,0	859	0,1	14
Other manufacturing	36-37	21	5 974	2 044	0,4	3 930	0,6	34
Construction	45	16	51 707	8 169	1,5	43 538	7,2	16
Services	50-99	386	243 380	67 957	12,7	175 423	29,0	28
Sales of motor vehicles	50	11	12 958	3 400	0,6	9 558	1,6	26
Wholesale trade	51	183	26 243	8 876	1,7	17 367	2,9	34
Retail trade	52	25	71 145	11 388	2,1	59 757	9,9	16
Hotels and restaurants	55	10	10 900	5 927	1,1	4 973	0,8	54
Land transport	60	7	8 911	925	0,2	7 986	1,3	10
Sea and air transport	61-62	12	13 431	8 222	1,5	5 209	0,9	61
Supporting transport, travel agencies, post / telecom	63-64	14	44 684	5 125	1,0	39 559	6,5	11
Financial services	65-67	8	3 068	264	0,0	2 804	0,5	9
Real estate	70	11	2 024	618	0,1	1 406	0,2	31
Renting companies	71	7	222	47	0,0	175	0,0	21
Data consultancy	72	18	3 794	1 219	0,2	2 575	0,4	32
Research and development	73	5	112	62	0,0	50	0,0	55
Other business services	74	62	43 166	21 676	4,1	21 490	3,6	50
Other services	75-99	13	2 722	208	0,0	2 514	0,4	8
Unknown industry	unknown	15	694	217	0,0	477	0,1	31
TOTAL	01-99	754 0	1 140 319	535 147	100,0	605 172	100,0	47

Note Degree of internationalisation = Number of employees abroad in per cent of total number of employees.

Table 9

Number of employees in Swedish owned groups having subsidiaries abroad by industry in Sweden 1990

Industry	NACE Activity code	Total		Abroad		Sweden		Degree of internatio- nalisation (%)
		No. of groups	No. of employees	No. of employees	Share of employ- ees (%)	No. of employees	Share of employ- ees (%)	
Agriculture, forestry, fishing	1	3	1 061	37	0,0	1 024	0,1	3,5
Mining and quarrying	2	5	4 924	935	0,2	3 989	0,6	19,0
Manufacturing industry	3	315	963 332	523 446	88,6	439 886	61,7	54,3
	31	6	6 697	2 639	0,4	4 058	0,6	39,4
Textiles	32	23	6 178	2 090	0,4	4 088	0,6	33,8
Wood and wood products	33	24	14 858	5 061	0,9	9 797	1,4	34,1
Pulp, paper	341	16	136 906	72 018	12,2	64 888	9,1	52,6
Publishing, printing	342	22	39 747	20 308	3,4	19 439	2,7	51,1
Chemicals, rubber, plastic prod.	35	34	73 109	37 970	6,4	35 139	4,9	51,9
Non- metallic mineral products	36	8	11 903	5 802	1,0	6 101	0,9	48,7
Basic metal industries	37	8	37 199	8 625	1,5	28 574	4,0	23,2
Machinery and equipment	38	171	635 647	368 645	62,4	267 002	37,4	58,0
Fabricated metal products	381	53	74 349	33 614	5,7	40 735	5,7	45,2
Machinery	382	65	310 169	229 310	38,8	80 859	11,3	73,9
Electrical machinery	383	16	72 780	46 239	7,8	26 541	3,7	63,5
Transports	384	24	162 832	48 297	8,2	114 535	16,1	29,7
Optical instruments, photo- graphic equipm., watches, clocks	385	13	15 517	11 185	1,9	4 332	0,6	72,1
Other manufacturing	39	3	1 088	288	0,0	800	0,1	26,5
Construction	5	32	105 394	11 172	1,9	94 222	13,2	10,6
Services	6-9	317	229 563	55 437	9,4	174 126	24,4	24,1
Trade, hotels- and restaurants	6	188	119 873	31 422	5,3	88 451	12,4	26,2
Wholesale trade	61	153	14 765	6 036	1,0	8 729	1,2	40,9
Retail trade	62	28	59 265	8 963	1,5	50 302	7,1	15,1
Hotels and restaurants	63	7	45 843	16 423	2,8	29 420	4,1	35,8
Communications, post- and telecommunications	7	25	75 865	12 634	2,1	63 231	8,9	16,7
Banks- insurance companies real estate, consultancy	8	87	31 776	11 011	1,9	20 765	2,9	34,7
Other services	9	17	2 049	370	0,1	1 679	0,2	18,1
TOTAL		672	1 304 274	591 027	100,0	713 247	100,0	45,3

Note Degree of internationalisation = Number of employees abroad in per cent of total number of employees.

Table 10

Number of employees in Swedish owned groups having subsidiaries abroad by degree of internationalisation 1997

Country of location	Degree of internationalisation			
	Total	< 20 %	20-49%	≥ 50%
EUROPE	417 532	17 629	69 135	330 768
Whereof				
EU15 (excl. Sweden)	334 570	10 882	56 556	267 132
Germany	71 724	1 027	10 689	60 008
UK	55 286	1 788	7 781	45 717
France	38 422	322	4 676	33 424
Denmark	33 276	2 621	13 067	17 588
Italy	33 058	370	1 097	31 591
Finland	24 538	2 429	6 794	15 315
Spain	19 616	24	1 045	18 547
Belgium / Luxembourg	19 081	1 051	8 069	9 961
Netherlands	18 104	710	1 860	15 534
Austria	9 939	510	644	8 785
Portugal	8 071	8	680	7 383
Ireland	2 683	22	154	2 507
Greece	772	0	0	772
Whereof				
Central- and Eastern Europe	46 766	1 168	3 924	41 674
Poland	11 133	169	2 253	8 711
Estonia	8 284	364	491	7 429
Hungary	7 889	87	123	7 679
Czech Republic / Slovakia	6 601	35	93	6 473
Russia	5 856	97	428	5 331
Latvia	3 149	223	244	2 682
Lithuania	841	114	151	576
Whereof				
Other Europe	36 196	5 579	8 655	21 962
Norway	28 544	4 802	7 815	15 927
Switzerland	5 266	55	563	4 648
AMERICA	143 575	2 811	12 877	127 887
USA	94 837	2 054	6 807	85 976
Brazil	18 426	8	1 789	16 629
Canada	9 865	7	3 806	6 052
Mexico	6 324	1	64	6 259
Argentina	3 320	1	140	3 179
ASIA	45 811	867	2 464	42 480
China	8847	42	78	8727
India	8 338	22	122	8 194
Thailand	5 452	18	569	4 865
Japan	4 513	31	527	3 955
Indonesia	4 323	11	1	4 311
Malaysia	3 407	64	611	2 732
Philippines	2 332	17	1	2 314

Table 10 (continues)

Number of employees in Swedish owned groups having subsidiaries abroad by degree of internationalisation 1997

Country of location	Degree of internationalisation			
	Total	< 20 %	20-49%	≥ 50%
Singapore	1 605	198	212	1 195
Hong Kong	1 215	159	51	1 005
Taiwan	989	0	12	977
South Korea	754	5	50	699
Saudi Arabia	106	0	38	68
AFRICA	10 809	28	10	10 771
South Africa	3 068	0	0	3 068
Tanzania	188	1	0	187
Zimbabwe	178	1	0	177
OCEANIA	8 859	680	744	7 435
Australia	7 716	676	744	6 296
New Zealand	1 119	4	0	1 115
ABROAD	627 129	21 105	85 709	520 318
SWEDEN	667 046	327 888	149 968	189 190
Total number of employees	1 294 175	348 993	235 677	709 508
Number of groups	860	351	274	235

Note Degree of internationalisation = Number of employees abroad in per cent of total number of employees.

Table 11

Number of employees in the largest manufacturing groups 1997,1996, 1995, 1994, 1993 and 1990

Country of location	Number of employees					
	1997	1996	1995	1994	1993	1990
EUROPE	284 842	288 556	275 531	265 571	276 853	317 824
Whereof						
EU15 (excl. Sweden)	238 825	249 743	246 822	240 766	254 250	299 459
Germany	53 752	59 657	60 357	48 495	50 214	71 953
UK	39 531	42 466	44 300	48 490	54 715	60 096
Italy	32 537	32 058	31 625	35 009	34 353	38 400
France	29 845	30 696	29 354	29 071	30 192	33 614
Belgium/Luxembourg	16 536	17 217	16 258	15 357	15 936	15 993
Denmark	16 401	16 870	15 790	16 275	17 423	22 358
Netherlands	14 862	15 624	15 871	15 663	16 255	15 718
Spain	11 435	12 644	12 373	13 273	14 128	17 222
Finland	10 702	9 399	7 791	7 164	7 046	9 897
Austria	8 072	8 177	8 528	6 419	6 841	7 336
Ireland	2 282	2 164	1 996	1 962	2 383	2 245
Portugal	2 098	2 089	1 928	2 978	3 935	4 035
Greece	772	682	651	610	829	592
Whereof						
Central- and Eastern Europe	31 188	22 800	14 176	9 982	7 821	229
Poland	7 033	5 281	2 660	1 127	709	13
Estonia	6 244	5 921	961	842	27	0
Czech Republic / Slovakia	6 305	2 559	1 668	1 332	1 286	30
Hungary	6 088	5 612	5 383	5 000	5 180	150
Russia	2 104	1 979	2 062	823	102	0
Latvia	1 741	855	753	679	323	0
Lithuania	341	125	210	48	22	0
Slovenia	77	151	300	1	4	..
Whereof						
Other Europe	14 829	16 013	14 533	14 823	14 782	18 136
Norway	10 288	11 887	10 378	10 720	10 471	12 929
Switzerland	3 507	3 293	3 407	3 558	3 807	4 504
Turkey	920	712	545	470	455	648
AMERICA	132 195	124 330	115 401	113 591	125 891	147 022
USA	86 285	79 744	76 663	73 960	78 834	86 184
Brazil	18 381	19 517	13 836	14 009	18 344	24 696
Canada	9 764	8 153	7 747	6 292	7 372	8 932
Mexico	6 311	6 708	6 903	8 395	9 742	10 225
Argentina	3 319	3 243	3 219	3 170	3 262	6 902
Colombia	1 682	1 654	1 614	1 537	1 545	2 172
Peru	1 578	1 450	1 526	1 816	1 715	1 704
Chile	1 342	1 341	1 119	1 080	1 170	1 248
Venezuela	1 160	1 078	970	2 003	2 491	3 715
Ecuador	453	468	516	255	507	596

Table 11 (continues)

Number of employees in the largest manufacturing groups 1997, 1996, 1995, 1994, 1993 and 1990

Country of location	Number of employees					
	1997	1996	1995	1994	1993	1990
ASIA	41 725	38 714	32 731	31 784	30 870	35 988
India	8 251	7 595	6 502	4 026	5 749	7 101
China	8 673	7 256	4 447	3 056	475	68
Thailand	5 406	5 171	4 661	4 712	4 358	5 865
Japan	4 357	4 336	3 842	4 255	4 138	4 521
Malaysia	3 204	3 750	4 166	4 428	4 557	4 376
Indonesia	4 310	3 738	2 897	3 763	2 585	2 171
Philippines	1 815	1 852	1 647	1 263	3 393	2 687
Singapore	1 262	1 214	1 229	1 207	1 302	2 319
Taiwan	979	891	955	1 012	1 029	1 373
South Korea	729	785	502	455	511	760
Hong Kong	806	742	800	917	868	2 282
AFRICA	5 454	5 178	4 430	3 439	2 780	3 368
South Africa	3 044	2 838	2 539	1 360	1 105	1 628
Ghana	1 000	967	934	866	693	..
OCEANIA	8 583	9 012	8 555	8 136	7 937	9 605
Australia	7 456	7 673	7 549	7 352	7 177	8 083
New Zealand	1 103	1 111	1 006	763	736	1 488
UNSPECIFIED	728	1 519	1 309	2 106	1 348	275
ABROAD	473 527	467 309	437 957	424 627	445 679	514 082
SWEDEN	275 556	297 215	296 639	288 784	298 830	389 796
Total number of employees	749 083	764 524	734 596	713 411	744 509	903 878
Number of groups	80	80	78	82	84	81

Note Enterprise groups in the largest manufacturing groups 1997:

Addum, AGA, Albert Bonnier, Althinvest International, Aros Quality Group, ASSA Abloy, Assidomän, Astra, Atlas Copco, Atle, Atlet, Bong Ljungdahl, Borås Wärfveri, Brio, BT Industries, Camfil, Cardo, Celsius, Duni Holding, EFG, Elanders, Eldon, Electrolux, Esselte, Falköping Holding, G Bergström Förvaltning, Gambro, GCE Gas Control Equipment, Getinge Industrier, Gnosjö Konstsmide, Grimaldi Industri, Gränges AB, Haldex, Hexagon, Hjalmar Svenfelts Stiftelse, Höganäs, Industriförvaltnings AB Kinnevik, Industrivärden, Investor, RO, Johnson Pump International, Lindégruppen, Luossavaara, Mo och Domsjö, Munters, NEFAB, Nibe Industrier, Nobel Biocare, Nobia, Nordifagruppen, Norrfrys Förvaltning, Perstorp, Platanen, PLM, Proventus, SAAB Automobile, Sandvik, Scancem, Scania, SKF, SMZ Industrier, Spectra-Physics, Spira Intressenter, SSAB, STC Interfinans, Stora Kopparbergs Bergslags AB, Strålfors, Svedala Industri, Svenska Cellulosa, Svenska Lantmännen, Swedish Match, Swegmark Invest, Telefonaktiebolaget L M Ericsson, Tibia Konsult, TrebrUnited Kingdom, Trelleborg, Trioplast Industrier, VBG, Viking Sewing Machines, Volvo

In 1997, the 80 largest manufacturing groups accounted for 98 per cent of all employment abroad in Swedish - owned manufacturing groups. They also accounted for 75,5 per cent of all employees in Swedish owned enterprise groups abroad.

Table 12

Number of employees in the largest service groups 1997, 1996, 1995, 1994, 1993 and 1990

Country of location	Number of employees					
	1997	1996	1995	1994	1993	1990
EUROPE	95 978	86 671	60 431	59 234	52 992	37 539
Whereof						
EU15 (excl. Sweden)	72 603	68 205	47 260	47 337	41 141	29 580
UK	13 607	13 373	8 018	8 806	7 903	9 400
Germany	13 440	11 613	7 261	7 529	7 705	3 914
Finland	8 393	10 406	5 087	5 465	3 271	1 607
Spain	8 057	8 105	7 512	7 076	5 790	85
Denmark	9 731	7 002	5 746	5 421	5 344	5 079
Portugal	5 526	6 052	4 619	5 013	3 109	4 228
France	7 404	5 027	4 081	3 756	4 023	1 122
Netherlands	2 585	2 946	2 650	2 342	2 257	1 997
Austria	1 792	1 520	875	722	640	280
Belgium/ Luxembourg	1 423	1 396	1 101	906	812	725
Italy	325	352	181	170	176	954
Ireland	320	321	129	131	111	185
Whereof						
Central- and Eastern Europe	9 422	6 699	3 290	2 390	2 162	67
Poland	2 049	1 572	375	297	310	66
Russia	2 849	1 376	945	701	688	0
Hungary	1 454	985	702	672	591	0
Estonia	1 033	710	268	203	199	0
Latvia	657	1 176	439	302	360	0
Lithuania	480	556	451	150	0	0
Whereof						
Other Europe	13 953	11 767	9 881	9 507	9 689	7 892
Norway	11 489	9 891	8 405	8 020	8 247	7 045
Switzerland	1 686	1 527	1 426	1 435	1 391	789
AMERICA	2 533	2 636	1 758	1 963	2 285	2 596
USA	2 364	2 253	1 676	1 753	2 127	1 725
Canada	23	20	53	57	27	498
Brazil	18	6	22	149	131	339
ASIA	1 722	1 087	477	557	557	552
Hong Kong	357	490	205	196	204	327
Singapore	235	201	60	15	39	152
Japan	87	70	26	26	28	43
China	140	55	27	0	0	0
India	59	28	20	64	59	30

Table 12 (continues)

Number of employees in the largest service groups 1997, 1996, 1995, 1994, 1993 and 1990

Country of location	Number of employees					
	1997	1996	1995	1994	1993	1990
AFRICA	26	36	49	60	0	12
Angola	10	16	13	14	0	8
Mocambique	6	8	10	15	0	0
OCEANIA	222	184	167	165	145	54
Australia	212	184	158	161	145	50
UNSPECIFIED	331	531	305	554	684	623
ABROAD	100 812	91 145	63 187	62 533	56 663	41 376
SWEDEN	122 092	127 573	102 245	104 361	108 615	80 899
Total number of employees	222 904	218 718	165 432	166 894	165 278	122 275
Number of groups	40	40	38	41	40	35

Note Enterprise groups in the largest service groups 1997:

ASG, Atlantic Container Line, Axessor Invest, Baltic Beverages Holding, Bergman & Beving, Bilia, BTL, Catella Holding, Conterm nternational, Dahl International, Elekta, Elektronikgruppen BK, Enator, Frigoscandia Equipment Holding, Fritidsresor, Försäkringsaktiebolaget Skandia, Förvaltningsaktiebolaget Ratos, Gomab Möbel, Industrial and Financial Systems, Intenia International, Investment AB Bure, Kooperativa Förbundet Ek förening, Leif Rahmqvist AB, Lindex, Linjebuss, Modern Times Group MTG, Portwear, Rederi AB Soya, Scandiaconsult, Scandic Hotels, Securitas, SE-banken, Spira, Stefan Persson Placering, Stefo Inter, Stena Line, Svenska Handelsbanken, Telia, WM-data

The 40 largest service groups accounted in 1997 for 90 per cent of all employees in Swedish owned service groups abroad. They also accounted for 16,1 per cent of all employees in Swedish owned enterprise groups abroad.

Table 13
Number of employees in the largest manufacturing groups 1997

Country of location	Number of employees	Country of location	Number of employees
	1997		1997
EUROPE	222 837	Mexico	6 137
Whereof		Argentina	3 197
EU15 (excl. Sweden)	193 308	Colombia	1 682
Germany	44 272	Peru	1 578
United Kingdom	30 586	Chile	1 342
Italy	30 758	Venezuela	1 159
France	23 485	Ecuador	453
Belgium / Luxembourg	13 386		
Netherlands	11 863	ASIA	38 736
Spain	10 080	China	8 194
Denmark	9 866	India	8 118
Finland	7 088	Thailand	5 402
Austria	7 313	Japan	4 078
Ireland	2 093	Indonesia	3 654
Portugal	1 750	Malaysia	3 013
Greece	768	Philippines	1 526
Whereof		Singapore	1 136
Central- and Eastern		Taiwan	941
Europe	19 205	Hong Kong	724
Czech Republic / Slovakia	5 768	South Korea	713
Hungary	5 551		
Poland	3 885	AFRICA	5 337
Russia	1 923	South Africa	2 937
Estonia	559	Ghana	1 000
Latvia	266		
Lithuania	245	OCEANIA	7 378
Slovenia	77	Australia	6 392
Whereof		New Zealand	962
Other Europe	10 324	UNSPECIFIED	379
Norway	6 331		
Switzerland	2 964	ABROAD	389 704
Turkey	920	SWEDEN	185 164
		TOTAL	574 868
AMERICA	115 037		
USA	72 194	Number of groups	20
Brazil	17 162		
Canada	8 307		

Note Enterprise groups in the largest manufacturing groups 1997:

AGA, Astra, Perstorp, Svenska Cellulosa, Assidomän, Stora Kopparbergs Bergslags AB, Mo och Domsjö, ASSA Abloy, Atlas Copco, Cardo, Electrolux, Gambro, Telefonaktiebolaget L M Ericsson, SAAB Automobile, Scania, Sandvik, SKF, Svedala Industri, Volvo, Scancem

The 20 largest manufacturing groups accounted for 81 per cent of all employees employed abroad in Swedish owned manufacturing groups in 1997. They also accounted for 62 per cent of all employees working abroad in all Swedish owned enterprise groups.

Facts on survey

This section presents the methodological and quality aspects of the survey. The survey is described in respect to the scope, method of selection, some important definitions, sources, publication and quality.

Background and Objective

As of 1st January, 2001, the Swedish Institute for Growth Policy Studies, (ITPS) is responsible government authority for official statistics on International business. The surveys include foreign owned enterprises in Sweden, Swedish enterprise groups having subsidiaries abroad and the structure of the total business sector according to the degree of internationalisation.

The Swedish business sector is to an increasingly large degree becoming more internationalised. Since the end of the 1980's the term globalisation has been used to describe the new and more complex relationships between trade and direct investment, as well as the increased interdependency between the activities of an enterprise in different countries. The aim of gathering and analysing data on international business is to try to gain more knowledge on how the process of globalisation affects the Swedish business sector. In pursuit of this, both foreign ownership of enterprises in Sweden and Swedish ownership of enterprises abroad are studied. In addition, the activities of large Swedish-owned enterprise groups outside Sweden's borders are analysed in greater depth.

Extent of survey

Previously, a total survey of the number of employees working abroad in all enterprise groups in Sweden with foreign subsidiaries has been carried out every third year. However, the 1997 survey was the first time two surveys has been carried out in consecutive years. The population consists of all enterprise groups in Sweden that, according to the enterprise group register at Statistics Sweden had at least one subsidiary based abroad during the year the data was gathered. This survey concerns the year 1997, when there were 2 235 enterprise groups with subsidiaries abroad. Of these 1 164 had at least one employee abroad, while 1 071 enterprise groups had subsidiaries abroad but no employees.

As mentioned above, the enterprise groups with at least one employee abroad was 1 164. Of these, 860 were Swedish-owned enterprise groups and 304 foreign owned. The tables in this survey only concern Swedish-owned enterprise groups having at least one employee abroad.

Variables and sources

The survey is based on the official annual report of the parent company, obtained from the Swedish Patent and Registration Office. Annual reports often include

details on the number of employees in Sweden and abroad, the latter with geographical distribution. If an annual report is either unclear or incomplete, further details are obtained via telephone contact.

Every enterprise group receives a particular activity code based on the industry in which the parent company is active. Such codes are based on definitions made by Statistics Sweden. An enterprise group receives a particular industry code depending on which activity most employees operate in. This only concerns activities carried out in Sweden, since there is no available information about the activities of overseas subsidiaries. A probable effect of this method is that the data for manufacturing activities are somewhat overstated.

Definitions

Statistical unit = Enterprise group

Country of location = A country where an enterprise group has a subsidiary with at least one employee. Both greenfield investments and acquisitions are included.

Number of employees = The full time equivalent during the financial year.

Degree of internationalisation = Number of employees abroad in per cent of total number of employees.

Investing country = Country of origin, UBO (Ultimate beneficiary owner)

Change in number employed and development of employment

Since the data concerns enterprise groups, the number of employees is partly affected by 'actual' employment developments and partly by the change in the structure of the enterprise groups over the years. Thus, the impact of the purchase, sale and closure of enterprises is included in employment developments. However, there is no possibility of distinguishing these effects. The example below describes the problem.

Suppose an enterprise group records that the number of employees between a period of two years falls by 10 000 persons. During the year a number of subsidiaries have been sold to a foreign buyer. In the previous year these subsidiaries had 15 000 employees. This means that the subsidiaries that were part of the company in both years had increased employment by 5 000 individuals. The reduced number of employees should therefore not be mixed up with an actual reduction in employment.

It should also be noted that the number of enterprise groups that are active outside Sweden's borders at a particular point in time affects the number of employees working in Sweden. The data for Sweden should therefore be treated with some caution.

Quality

The results of a statistical survey are affected by a number of erroneous sources, such as non-response, random errors, under- and overcoverage as well as other types of measurement errors.

Non- response

Non response concerns the number of enterprises that have not sent in annual reports to the Swedish Patent and Registration Office, as well as those enterprises for which records are incomplete and could not be completed via other channels. Greater pressure on enterprises to send in documents, particularly to the Swedish Patent and Registration Office, has reduced the non-response. For the 1997 survey some adjustments have been made with the aid of the 1996 survey for those enterprise groups that did not hand in the necessary documentation. Thus, the non- response was limited to only a few enterprise groups. These were mainly very small enterprises, and can safely be assumed to have little or no activity abroad. The effect of non-response on the total number of employees working abroad in 1997 ought to be one or two percentage points at the most.

Under- and overcoverage

Undercoverage refers to when enterprise groups with subsidiaries abroad are not included in the population. This effect can occur, but should be quite small (although the impact is hard to measure). Overcoverage is when enterprise groups without subsidiaries abroad are included in the population. However, this is not a problem since the records only include enterprise groups with employees in subsidiaries abroad.

Publication

This and other Statistical Reports are available on ITPS's web site: www.itps.se, free of charge.

Reports about foreign-owned enterprises can also be obtained through the OECD, UNCTAD and Eurostat. OECD 1999, *Measuring Globalisation, The Role of Multinationals in OECD Economies*. Eurostat's latest report about foreign owned enterprises is called *Foreign owned enterprises, Industry, Trade and Services, Theme 4-5/2000*. UNCTAD's annual publication is called *World Investment Report*.

Detailed records about the extent, content and quality of the financial statistics can be found in the Statistical Report named 'Economic accounts of companies 1996'.

List of Activities

The classification by activities has been made according to the Swedish Standard Classification of Economic Activities (SNI) which is based on the statistical classification of economic activities in the European Union, NACE Rev.1.

01-05	Agriculture, forestry and fishing	71	Renting of machinery and equipment without operator and of personal and household goods
10-37	Mining, quarrying and manufacturing		Computer and related activities
10-14	Mining and quarrying	72	Research and development
15-37	Manufacturing	73	Other business activities
15-16	Manufacture of food, beverage and tobacco	74	Other service activities
17-19	Textile, wearing apparel and leather industries	75-99	Activity code unknown
20	Manufacture of wood and wood products	0	
21	Manufacture of pulp, paper and paper products		
22	Publishing, printing and reproduction of recorded media		
23	Manufacture of coke, refined petroleum products and nuclear fuel		
24	Manufacture of chemicals and chemical products		
25	Manufacture of rubber and plastic products		
26	Manufacture of other non-metallic mineral products		
27	Manufacture of basic metals		
28-35	Manufacture of fabricated products, machinery and equipment		
28	Manufacture of fabricated metal products except machinery and equipment		
29	Manufacture of machinery and equipment		
30	Manufacture of office machinery and computers		
31	Manufacture of electrical machinery and apparatus		
32	Manufacture of radio, television and communication equipment and apparatus		
33	Manufacture of medical, precision and optical instruments, watches and clocks		
34	Manufacture of motor vehicles, trailers and semi-trailers		
35	Manufacture of other transport equipment		
36-37	Other manufacturing industry		
40-41	Electricity, gas and water supply		
45	Construction		
50-99	Service sector		
50	Sales and maintenance of motor vehicles, retail sale of fuel		
51	Wholesale trade and commission trade except of motor vehicles		
52	Retail trade, repair of personal and household goods		
55	Hotels and restaurants		
60	Land transport, transport via pipelines		
61	Water transport		
62	Air transport		
63	Supporting and auxiliary transport activities, activities of travel agencies		
64	Post and telecommunications		
65-67	Financial intermediation		
70	Real estate activities		