

Swedish groups with affiliates abroad 2006

Svenska koncerner med dotterbolag i utlandet 2006

Swedish groups with affiliates abroad 2006

Table of contents

Summary	2
Statistics with commentaries	3
Facts on statistics	15
Swedish controlled groups with most employees abroad	21
Tables	23



Authority responsible for statistics

The Swedish Institute for Growth Policy Studies (ITPS)
Studentplan 3, S-831 40 ÖSTERSUND
Tel +46 (0) 63 16 66 00
Fax +46 (0) 63 16 66 01
www.itps.se

Enquiries:

Ann-Sofie Karlsson
Tel +46 (0) 63 16 66 11
e-mail ann-sofie.karlsson@itps.se

Responsible publisher Brita Saxton
Östersund May 2008
ISSN1650-349X

Summary

The Swedish Institute for Growth Policy Studies (ITPS) has in accordance with the Act on Official Statistics (SFS 2001:99) and the Appendix to the Ordinance on Statistics (SFS 2001:100) the task of producing and making statistics on international enterprises available. As a part of this work ITPS produces an annual report on the affiliates of Swedish controlled groups abroad. This report only presents data concerning groups which have at least one employee in an affiliate abroad, and the data applies to business operations in 2006.

In 2006 there were 1 268 Swedish controlled groups with affiliates abroad, an increase of 69 groups since 2005. The number of employees in these amounted to slightly less than 1.5 million, an increase of 2 per cent over the preceding year. The number of employees abroad increased by slightly less than 26 000 to slightly more than 1 million, whilst the number in Sweden increased by slightly more than 6 000 persons to 496 000 employees.

China and Poland were the countries where Swedish international groups increased most. The number of employees decreased in some countries, amongst others, Finland, France and the USA. The majority of employees in Swedish controlled affiliates abroad are in Europe and America.

Of the 1 268 Swedish groups with affiliates abroad in 2006, 402 groups (32 %) had affiliates in Norway. Between 20 and 25 per cent of the groups had affiliates in the other Scandinavian countries, the UK, Germany and the USA.

The groups studied accounted for 38 per cent of Sweden's total exports of goods and 21 per cent of imports of goods in 2006.

This report only covers Swedish controlled groups with at least one affiliate and one employee abroad. The data is based on the annual reports of the groups, and is available from the Swedish Companies Registration Office (Bolagsverket). A group is defined as Swedish controlled, if 50 per cent of the group head, at the top of the group structure, is controlled by Swedish institutional controlling units. For more detailed information, see the section *Methods and Quality assurance*.

Statistics with commentaries

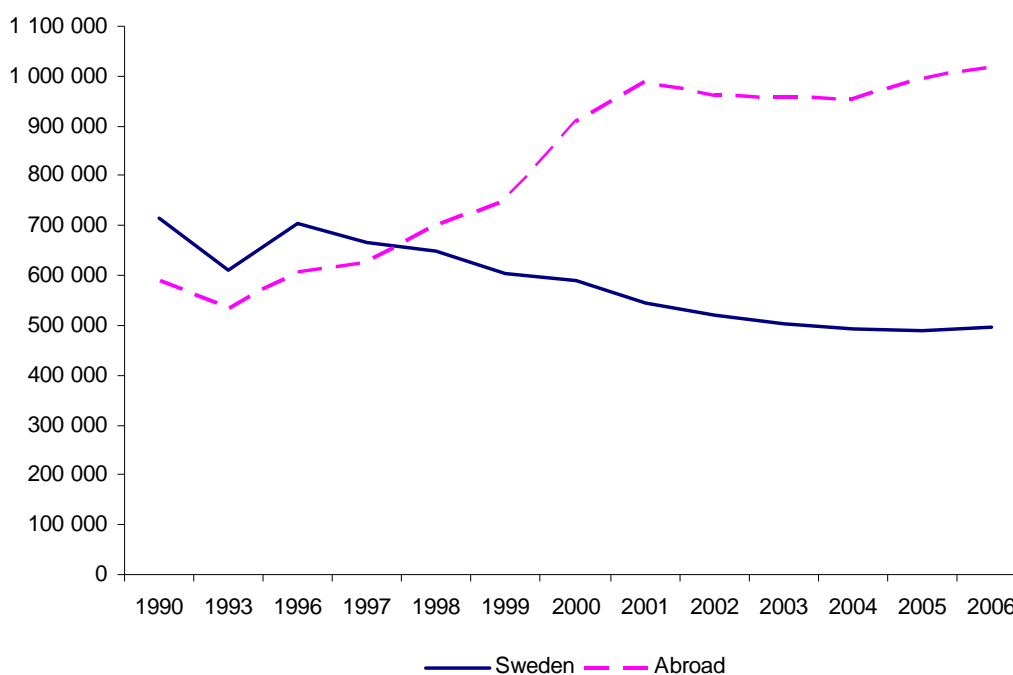
Introduction

The following report presents statistics on Swedish controlled groups with at least one employee abroad in 2006. All data apart from the figures on exports and imports is obtained from publicly available annual reports of the companies surveyed. A group is defined as Swedish controlled, if 50 per cent of the group head, at the top of the group structure, is controlled by Swedish institutional controlling units.

Long-term increase in the number of employees abroad

Swedish controlled groups with affiliates abroad had close to 1.5 million employees in 2006, an increase of two per cent over the preceding year. Abroad the number increased by 25 526 persons to 1 021 697 employees and the number in Sweden increased by 6 408 persons to 496 255 employees, see Figure 1. The number of Swedish groups with affiliates abroad increased from 1 199 groups in 2005 to 1 268 groups in 2006.

Figure 1 Number of employees in Swedish controlled groups with affiliates abroad 1990–2006.



Changes in the statistics can be largely explained by changes in the population of Swedish controlled groups. An entire group can change its nationality from one year to the next. A group may one year be Swedish controlled and the following year foreign controlled and vice versa. Within groups, changes are primarily due to acquisitions, sales and closures of companies. Changes in employment in existing enterprises may be said to have a limited impact on the statistics.

Changes in the population and group structures may have a large impact on the statistics, and these factors should be taken into account when interpreting changes in individual countries and individual industry groups. Changes in the population make comparisons

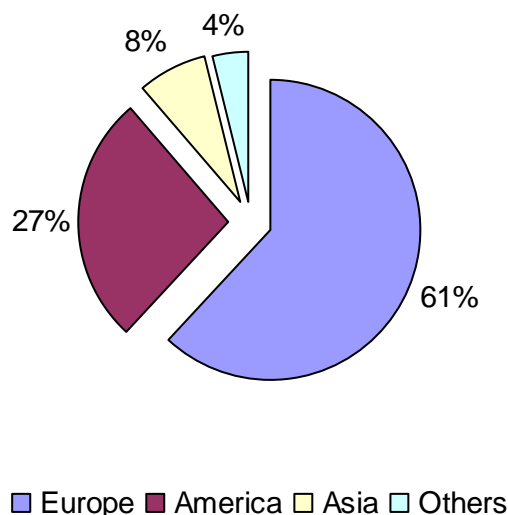
over time more difficult. The increase in the number of employees abroad in the latter part of the 1990s can be largely explained by a substantial increase in the number of employees in the USA. Major increases have also taken place in Germany, France, the Nordic Area, the Baltic area, Eastern Europe and China.

Changes in Eastern Europe are due to the fact that there have been large increases in the number of employees in both manufacturing and construction sectors. In the Baltic area Swedish controlled groups have increased substantially in the service sector, particularly in financial intermediation since the beginning of the 1990s. In Western Europe and the USA, the increases have taken place in the service sector. Manufacturing industry accounted for the major part of the increase in the number of employees in China.

Changes between 2005 and 2006

The number of employees increased in Europe, Asia and Africa. The largest increase was in Europe where the number of employees increased by 21 526 to 633 215. In Asia, the number of employees increased by 10 749 to 77 412, and in Africa by 532 to 11 542. In America the number of employees decreased by 7 802 persons to 271 044 and in Oceania the number decreased by 364 persons to 13 264. The majority of employees in Swedish affiliates abroad are to be found in Europe and America, see Figure 2.

Figure 2 Proportion of employees in Swedish groups with affiliates abroad by world region 2006.



Note: Employees in Sweden are not shown in the figure.

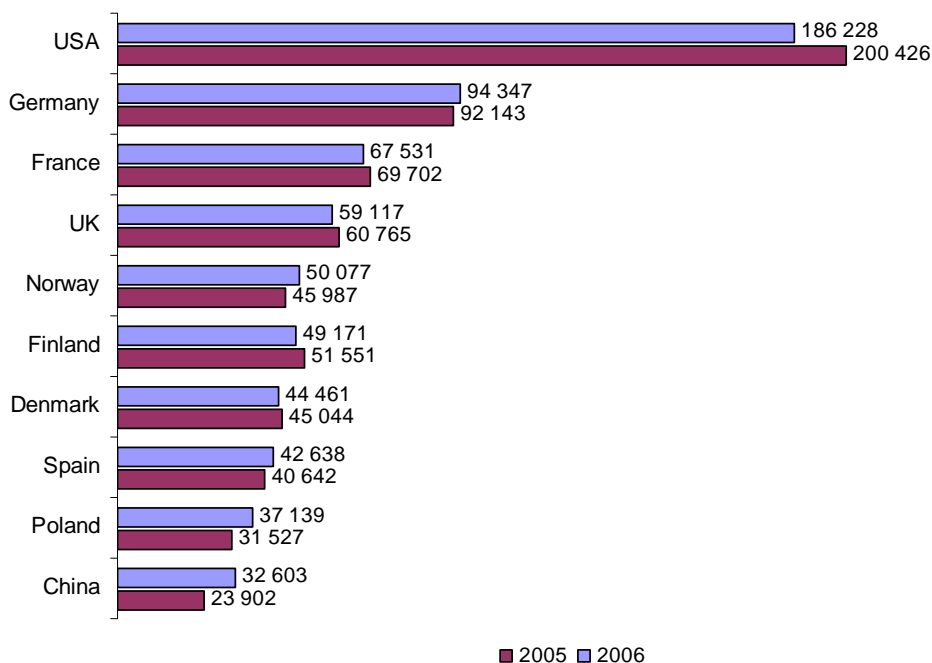
EU15 increased by 938 employees, and EU25 as a whole increased by 12 182 employees. The OECD countries as a whole increased employees by 818.

International Swedish groups increased most in China where there was an increase of 8 701 employees, and Poland with an increase of 5 612 employees. The number of employees decreased in some countries, amongst others in the USA where the number

decreased by 14 198. In Finland and France the number decreased by slightly more than 2 000 persons. Changes in other countries are presented in Table 1a.

The USA came out well on top in 2006 in terms of number of employees, as virtually one fifth of all employees abroad were located in the USA. 65 per cent of all employees abroad were in the 10 countries shown in Figure 3. 54 per cent of the employees were in EU25 and slightly less than 80 per cent in the OECD.

Figure 3 Countries where Swedish controlled groups with affiliates abroad had most employees in 2006.

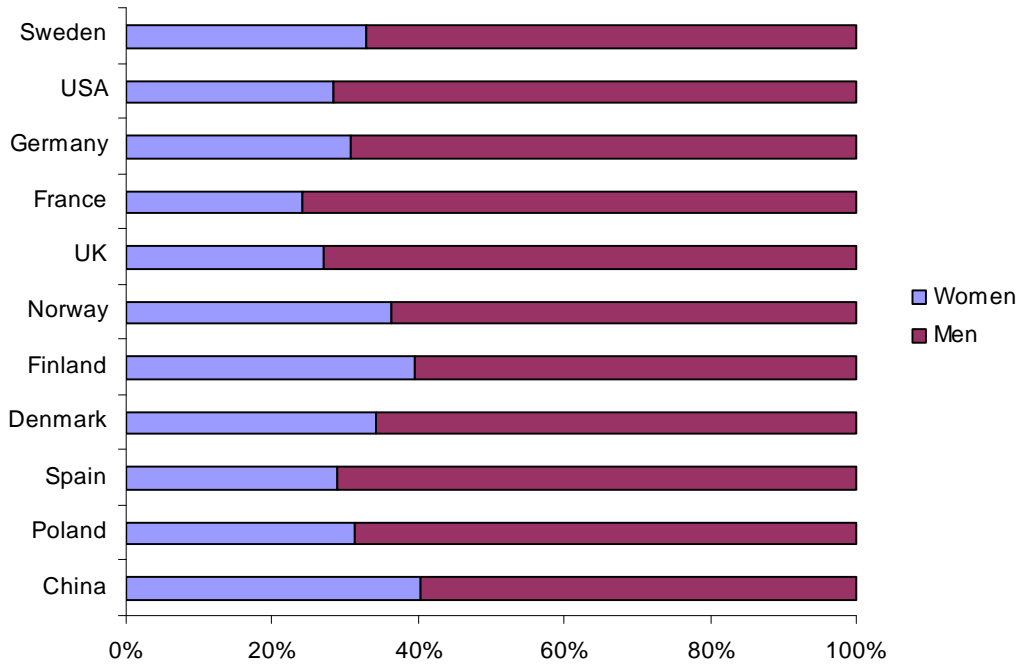


Largest proportion of women employees in China and Finland

Figure 4 shows the proportion of male and female employees in the 10 countries where Swedish controlled groups had most employees in 2006. Amongst these countries, the highest proportion was observed in China and Finland, where 40 per cent of employees were women. The lowest proportion was in France, where 24 per cent of employees were women. Of all OECD countries, Latvia had the highest proportion of women employees, whilst Turkey had the lowest proportion, with eight per cent women. Of the 496 255 employees in Sweden, it is estimated that 33 per cent were women, a higher proportion than in 2005. Amongst other larger establishment countries, India is highly prominent although only six per cent of the groups' employees were made up of women.

The results for the individual countries of location are presented in Table 2a, but note that the percentages in the table are lowest estimates, i.e. they are calculated on the basis of the total number of employees, including those for whom a gender breakdown is not given. The proportion of women and men in the table should thus be interpreted as being at least as great as shown. The figures above and in Figure 4, have, however, been calculated on the assumption that employees in countries where there is no disaggregation by gender, have the same gender distribution as other employees. The reason is that the size of the partial non-response should not affect comparability between countries.

Figure 4 Estimated distribution between men and women employed in countries where Swedish controlled groups with affiliates abroad had most employees in 2006.

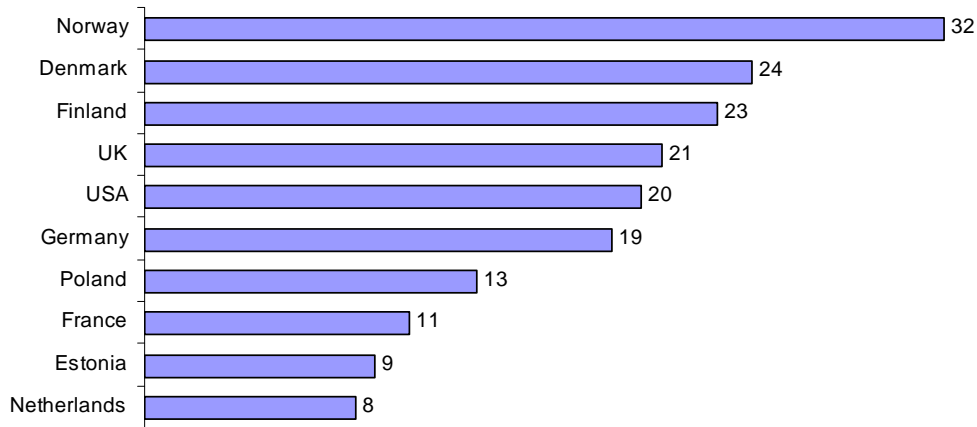


Note: In contrast to Table 2a, Figure 4 is based on the assumption that employees in the respective countries where no gender breakdown is reported, have the same distribution as other employees.

High frequency of establishment in the Nordic area

Of the 1 268 Swedish groups with affiliates abroad in 2006, 402 groups (32 %) had affiliates in Norway, see Figure 5. Norway was the country which had most establishments in Sweden. Between 18 and 24 per cent of the groups were established in the other Scandinavian countries, and the United Kingdom, Germany and the USA. 75 per cent of the groups had an affiliate in the OECD, 62 per cent in EU25, and 52 per cent in EU15. Note that the high percentages can be explained by the fact that the same group may have had affiliates in several countries. The data on which Figure 5 is based is shown in Table 3.

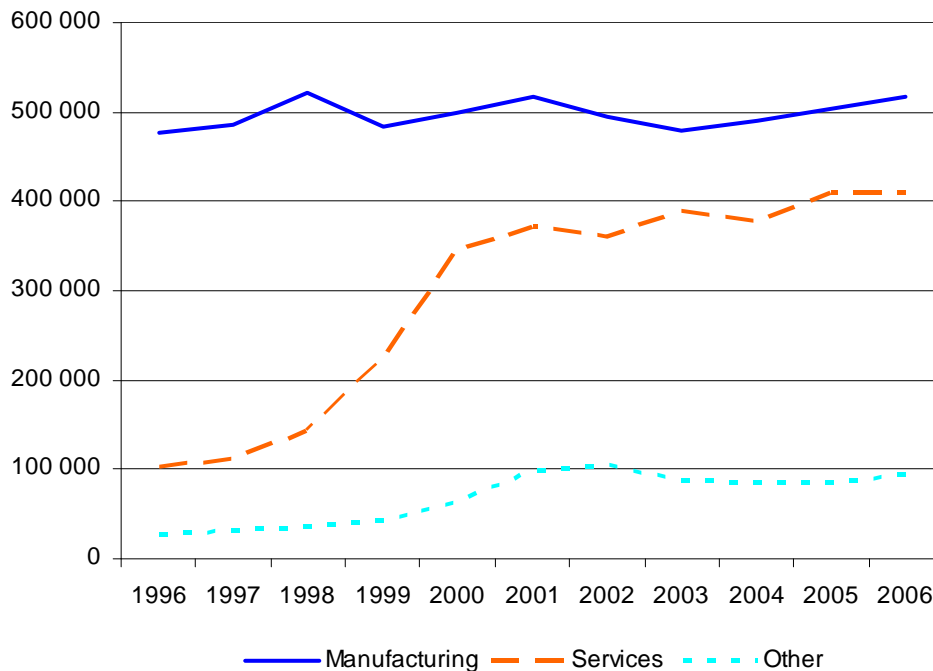
Figure 5 Countries of location where the largest proportion of Swedish controlled groups had affiliates in 2006, proportions in per cent.



Trends in manufacturing industry and service sector differ

Changes in the number of employees abroad at the end of the 1990s and the beginning of the 2000s can be explained primarily by changes in the service sector, see Figure 6. Changes in the number of employees in Swedish controlled enterprises in Sweden can be explained primarily by changes in manufacturing industry, see Figure 7.

Figure 6 Employees in Swedish controlled groups abroad 1996–2006 by manufacturing industry, service sector and others.

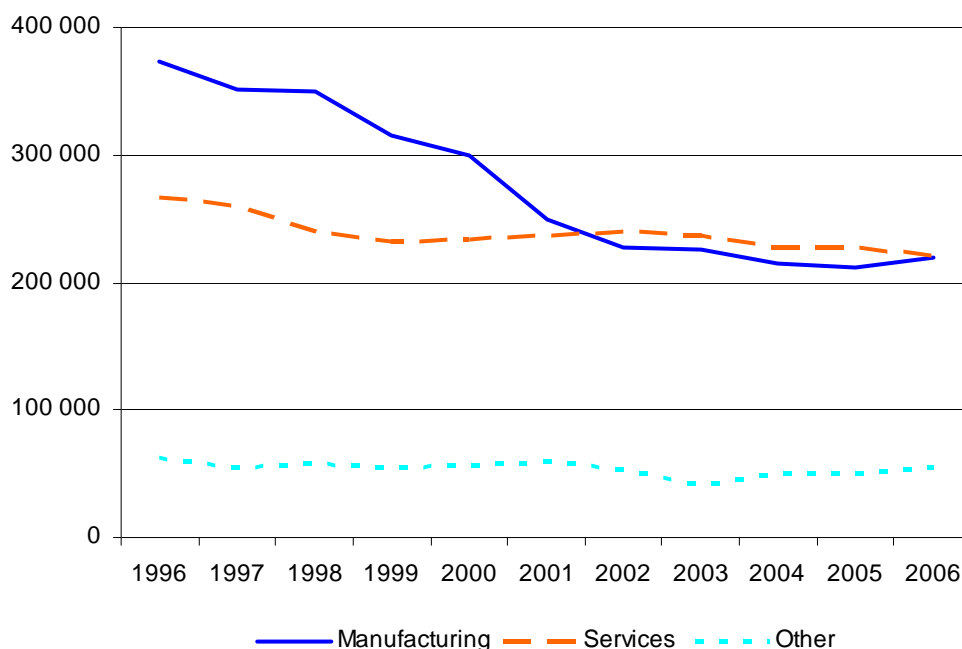


Note: Industry is defined in accordance with SNI 2002; manufacturing industry corresponds to the main classifications 15-37, the service sector to 50-99 and others to 01-14 and 40-45.

During the period 1996 to 2006, manufacturing groups had about 500 000 employees abroad, whilst service groups had 300 000 more employees in 2006 compared with 1996. The change can, however, be attributed to the fact that a few groups during the period made large acquisitions abroad. The category "Others" has increased abroad by close to 70 000 employees, this increase was mainly due to increases in the construction sector.

In Sweden employees in manufacturing groups have decreased by about 150 000 persons between 1996 and 2006. During the same period, the number of employees in service groups decreased by about 45 000 persons. Changes in Sweden can be partially explained by the fact that some large manufacturing groups came under foreign control and were thus no longer in the population surveyed.

Figure 7 Employees of Swedish groups in Sweden 1996–2006 by manufacturing industry, service sector and others.

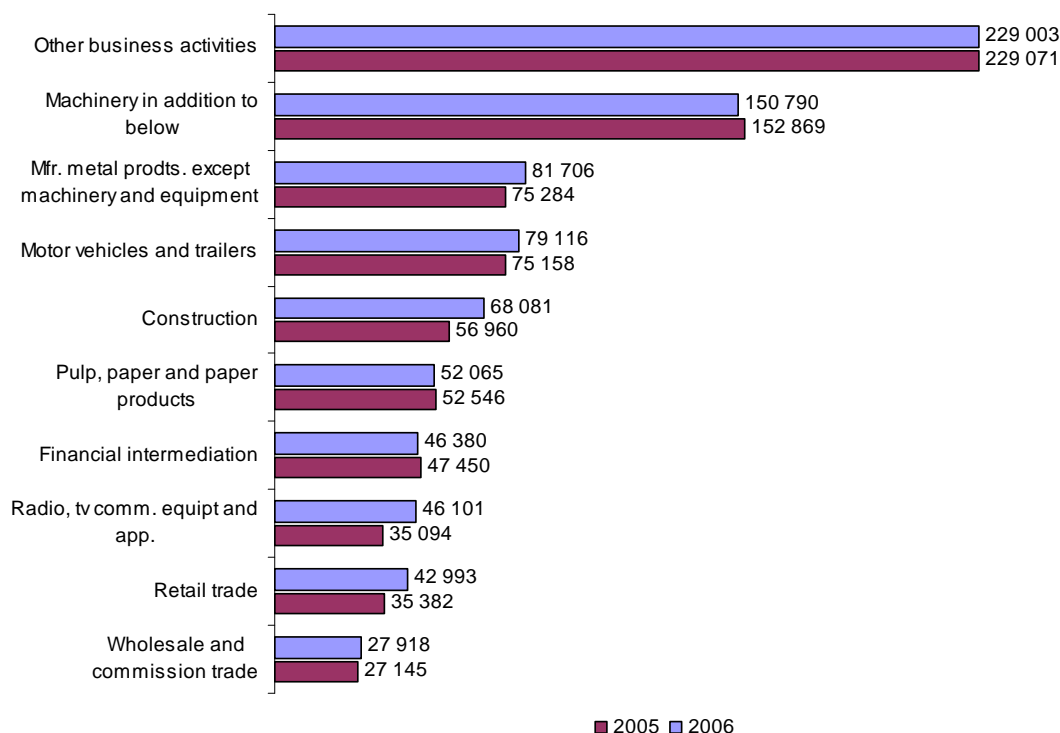


Note: Industry is defined in accordance with SNI 2002; manufacturing industry corresponds to the main classifications 15-37, the service sector to 50-99 and others to 01-14 and 40-45.

For groups in manufacturing industry, the number of employees abroad increased by 14 278 persons. In 2006 the number of employees increased to 517 455 persons. The groups in the service sector had 409 119 employees abroad in 2006, which was approximately the same as the year before. Groups in the classification "Others" had 95 123 employees abroad, which was 11 004 more than the previous year.

Among the ten industries which had most employees abroad in 2006, six industries had more employees abroad in 2006 than in 2005. The two industries with the largest increase were "Radio, tv comm. equipt and app. " and " Construction ", see Figure 8.

Figure 8 The ten industries where Swedish controlled groups had most employees abroad 2005 and 2006.



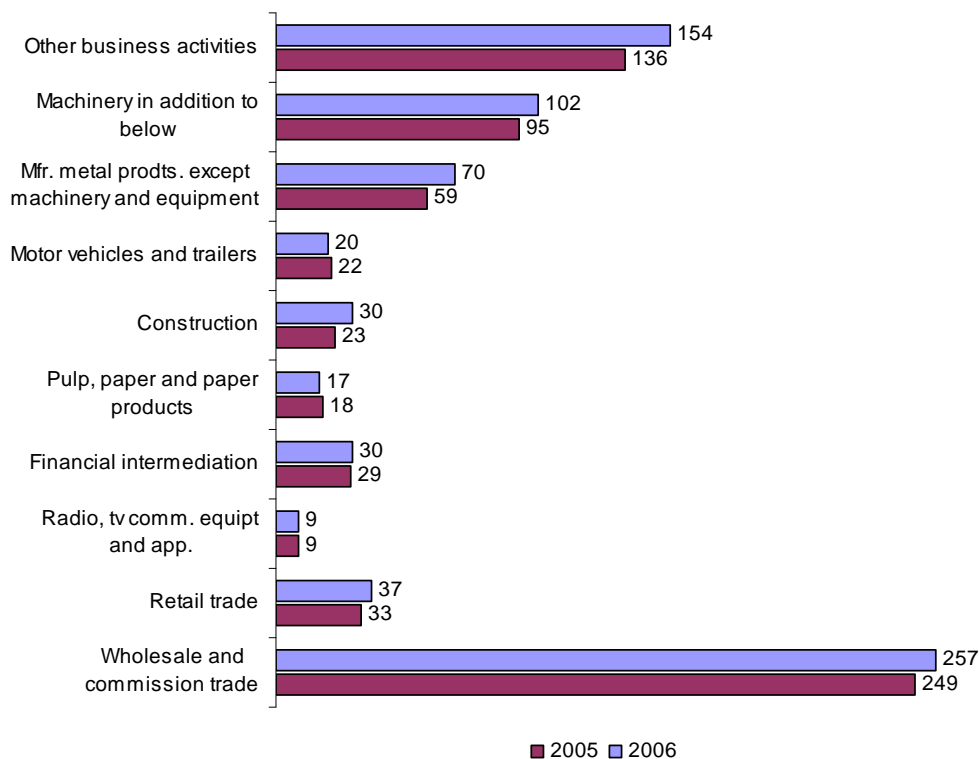
The number of active groups increased in seven out of ten of the industry classifications with most employees abroad, see Figure 9. The two industries with the largest increase were "Other business activities", and "Manufacture of metal products except machinery and equipment".

The number of employees in Sweden in manufacturing industry increased by 7 243 persons between the years 2005 and 2006. Manufacture of wood and wood products accounted for a large part of the increase of more than 5 000 employees. Decreases were recorded in publishing, and manufacturing of tele products. In 2006, Swedish controlled manufacturing groups had 219 422 employees in Sweden.

Swedish service groups had 221 690 employees in Sweden in 2006, which represents a decrease of 5 519 employees compared with the previous year. The decreases were mainly in Computer and related activities, and Post and telecommunications. Land transport and retailing recorded increases.

Detailed information concerning the number of employees in different industries is shown in Tables 9a and 9b. However, as mentioned earlier, when interpreting the figures, account should be taken of the fact that changes in individual industries may often be linked to changes concerning one or a small number of groups.

Figure 9 Number of Swedish groups with affiliates abroad 2006 and 2005; by the ten industries with most employees abroad in 2006.



The degree of internationalisation, namely the proportion of employees abroad, was 67 per cent in both 2006 and 2005. In overall terms, the groups in manufacturing industry had a higher degree of internationalisation than groups in the service sector in 2006, with figures of 70 and 65 per cent respectively. As regards specific industries, the degree of internationalisation was highest in "Other business activities" and manufacture of "Other machinery". The industries with the lowest degree of internationalisation were land transport, manufacture of basic metals, leather and leather products. It should be noted that the degree of internationalisation of the larger groups largely determines an individual industry's degree of internationalisation.

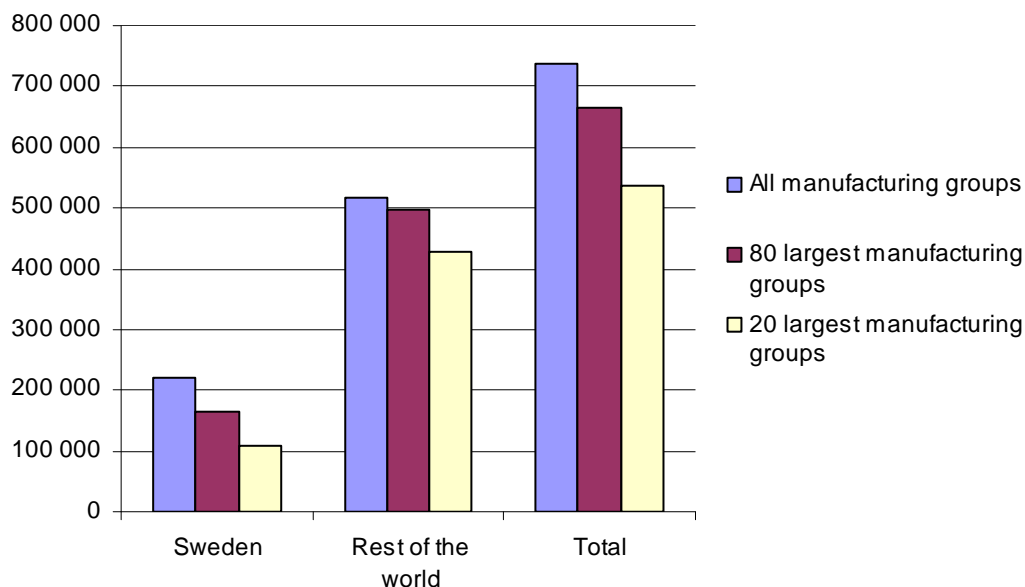
High dominance by a few large groups

The statistics for Swedish controlled groups with affiliates abroad are dominated by a few large groups. In manufacturing industry, the 80 groups with most employees abroad accounted for 96 per cent of all employees abroad in 2006, the same figure as for the previous year. In Sweden they accounted for 75 per cent of all employees, which was a slight decrease compared with the previous year. Corresponding figures for the 20 largest manufacturing groups were 83 and 49 per cent, which was a somewhat lower share than in 2005, see Figure 10. 80 groups had 73 per cent of their employees in the OECD and 20 groups had 74 per cent of their employees in the OECD. Compared to the 80 largest groups in 2005, the number of employees abroad increased 3 per cent and in Sweden by 0.5 per cent.

It should, however, be pointed out that these groups are not homogenous over time. A further aspect concerning comparability over time is that some of the "new" groups in a

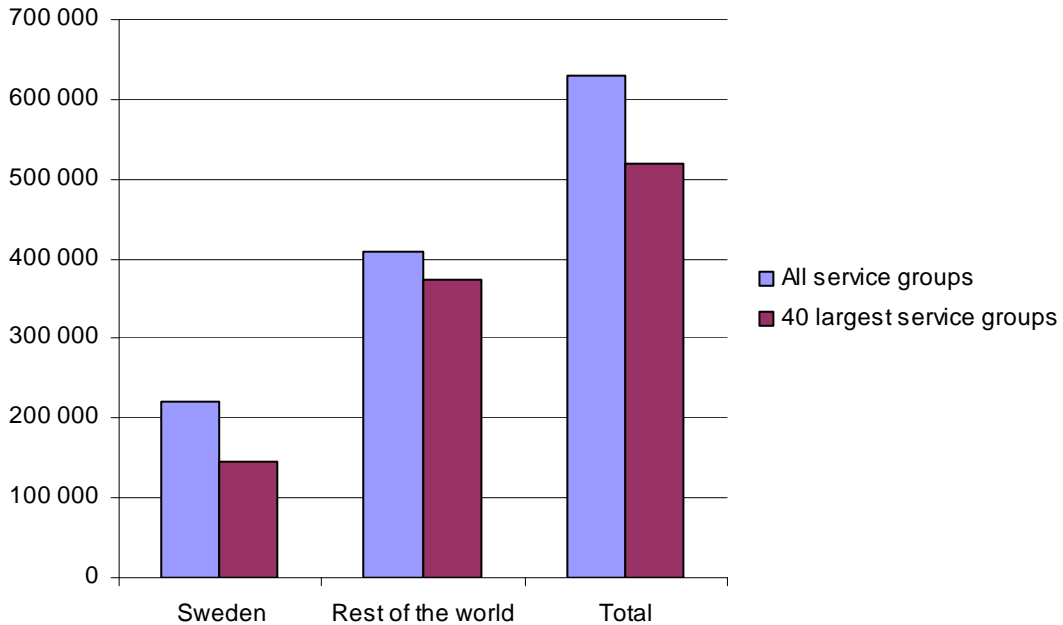
specific year may have been assigned to a certain group as a result of acquisitions of groups which were included in the previous year. Another cause of changes in these groups is that some groups may have come under foreign control.

Figure 10 Number of employees in the 80 largest and 20 largest Swedish controlled manufacturing groups with affiliates abroad 2006.



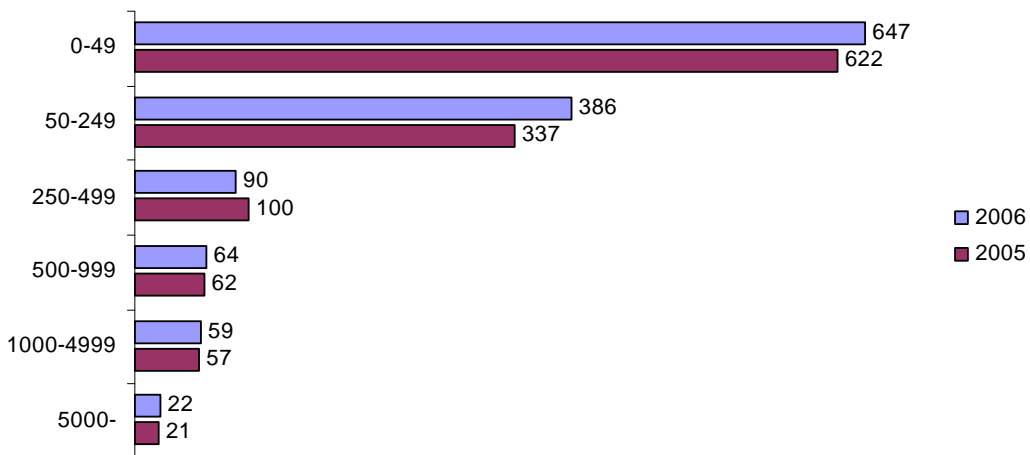
In the service sector, the 40 largest service groups had 91 per cent of all employees abroad, and 66 per cent of employees in Sweden in 2006, which was also the same as for the previous year, see Figure 11. Of the employees in the 40 largest service groups abroad, 88 per cent were in the OECD. Compared with 2005, the number of employees abroad remained unchanged, whilst in Sweden it decreased by four per cent.

Figure 11 Number of employees in the 40 largest Swedish controlled service groups with affiliates abroad 2006.



Since the groups were classified on the basis of the number of employees in Sweden, it appears that the largest number of Swedish controlled groups with affiliates abroad in 2006 were in the classification with between 0 to 49 employees, see Figure 12. The number of groups increased in most size classes between years 2005 and 2006.

Figure 12 Number of Swedish groups with affiliates abroad 2006 and 2005 by size of group. Group size is based on the group's employees in Sweden.



The majority of all employees abroad are in groups with at least 5 000 employees in Sweden. The 22 groups in the classification with at least 5 000 employees accounted in 2006 for approximately 55 per cent of all employees abroad, and 49 per cent of all employees in international Swedish groups in Sweden. In total, these groups had 808 637 employees in 2006, 563 917 abroad and 244 720 in Sweden.

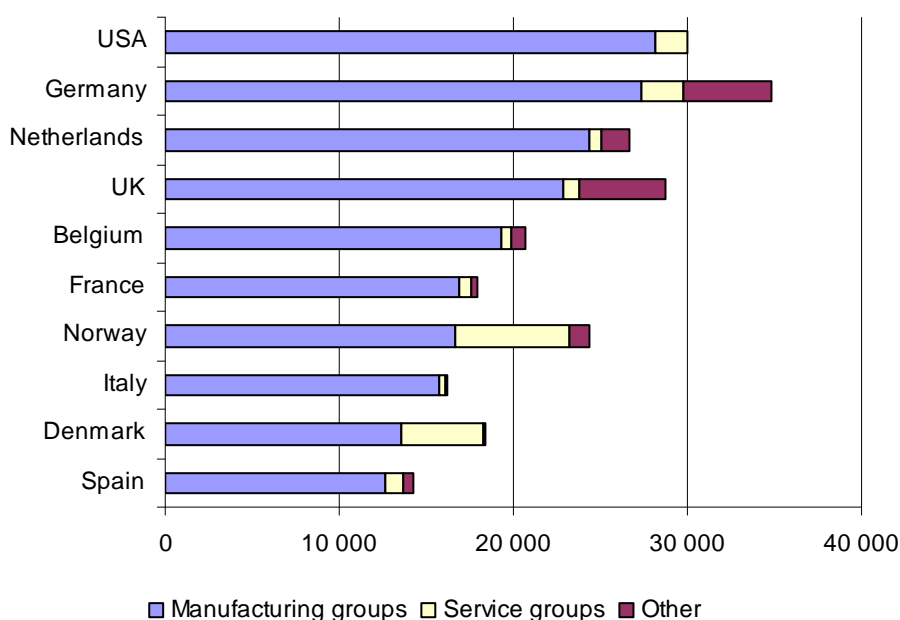
Export and import of goods

The following figures refer to Swedish exports and imports of goods for the 1 268 Swedish controlled international groups.

In 2006 these groups accounted for goods exports amounting in value to SEK 404 billion. Of this total, manufacturing groups accounted for SEK 351 billion and service groups for SEK 31 billion. In 2006, these groups accounted for 38 per cent of Sweden's total exports of goods. 57 per cent of all exports went to EU countries and nine per cent to Germany.

Figure 13 presents the groups exports of goods to the ten biggest receiving countries, by the categories of manufacturing, services and other groups. Exports from the service sector went mainly to Denmark and Norway, and exports from other groups went mainly to Germany and the UK.

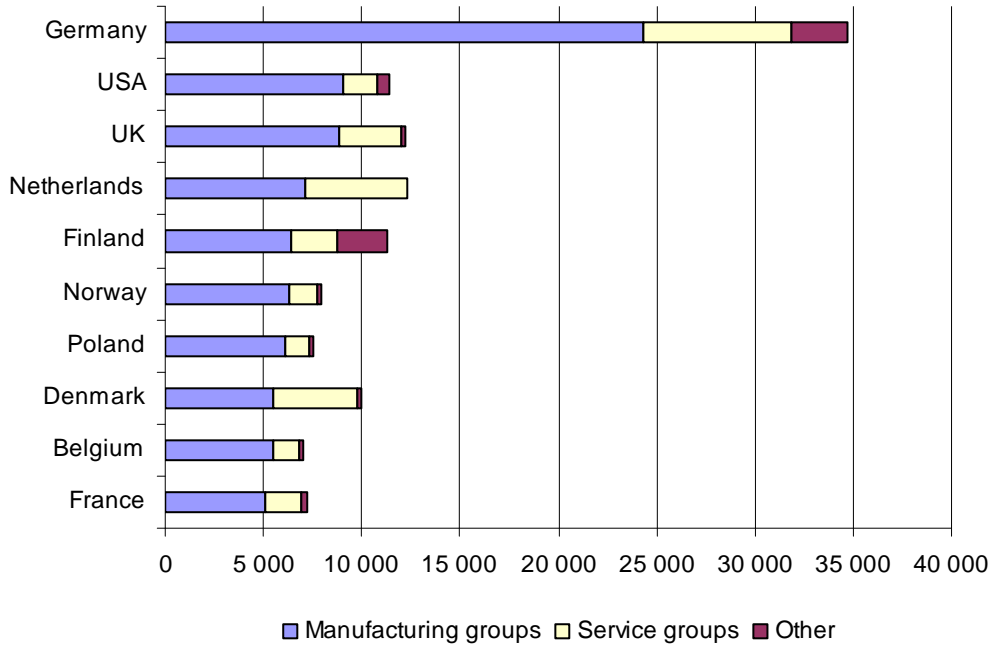
Figure 13 The ten largest export countries for Swedish controlled groups with affiliates abroad by manufacturing, service groups and other groups in 2006; SEK million.



Goods imports of the groups amounted to a total of SEK 196 billion in 2006, of which manufacturing groups accounted for SEK 126 billion, and service groups for SEK 57 billion. In total, Swedish controlled international enterprise group accounted for 21 per cent of all Swedish imports. 65 per cent of all imports originated from an EU country, and for Swedish international groups Germany was a particularly important trading partner, see Figure 14. Imports from Germany accounted for 18 per cent of the total value of imports. Of the ten countries which Swedish controlled international groups exported most to, eight were also ranked highest in terms of import value.

In total, the groups reported a trade surplus of SEK 208 billion. The manufacturing groups had a surplus of SEK 225 billion and the service groups a deficit of SEK 26 billion.

Figure 14 The ten largest import countries for Swedish controlled groups with affiliates abroad by manufacturing, service groups and other groups in 2006; SEK million.



Facts on statistics

Background and aims

The Swedish Institute for Growth Policy Studies (ITPS) has in accordance with the Act on Official Statistics (SFS 2001:99) and the Appendix to the Ordinance on Statistics (SFS 2001:100) the task of producing and making statistics on international enterprises available. "International enterprises" are defined as covering both enterprises in Sweden with foreign institutional controlling units and also Swedish controlled groups with business operations abroad. The latter category is surveyed in this report.

Statistical reports in the area can be obtained free of charge from the ITPS website at www.itps.se.

The title of this report has been changed to bring it into line with EU regulation No. 716/2007 as laid down in summer 2007. Earlier the reports were called *Swedish owned groups with business activities abroad*.

Statistical coverage

The current report only presents Swedish controlled groups which have at least one employee in an affiliate abroad. Swedish groups with employees abroad comprise groups in which Swedish institutional units control at least 50 per cent of the voting rights in the group head. If voting rights are equally distributed between foreign and Swedish controlling units, the group is regarded as Swedish controlled. If on the other hand foreign voting rights exceed 50 per cent, the group is regarded as foreign controlled and thus falls outside the scope of this survey.

Objects and population

The population studied is made up of all groups in Sweden which during the study year have affiliates abroad. The framework used is the group register maintained by MM Partner.

As for the Swedish controlled groups, the statistical unit studied is the enterprise group as a whole. One exception concerns State-owned public service corporations, where the units studied are parts of the group structure which have foreign affiliates.

Using the group and not the enterprise as the unit of study means that the focus is on the ultimate controlling institutional unit in each group structure even though direct control of an affiliate abroad can be traced back to a single enterprise within a group.

Reference period

The material in this report concerns Swedish controlled groups with affiliates abroad in financial year 2006.

Completeness

The survey of Swedish controlled groups with affiliates abroad is a part of the statistical area of "International enterprises". In addition to this report, surveys are produced on Foreign controlled enterprises in Sweden, co-ordinating surveys where international

enterprises are compared with other Swedish enterprises, and also surveys which focus on the investments of international enterprises in research and development.

Shortcomings in statistics on Swedish groups are principally related to the difficulties of collecting data on affiliates abroad. A specific shortcoming as a consequence is that the groups' industrial affiliation must be determined on the basis of the groups' main business operations in Sweden.

Reliability of the statistics

Overall reliability

All units in the framework population are studied, and this eliminates any uncertainty due to the size of the sample. Reliability is largely determined by the fact that a limited number of groups account for a very high proportion of total employment abroad. The quality of the study in the first instance is primarily dependent on the information provided by these large groups. In order to ensure a high level of quality, additional checks were thus run on the groups' annual reports and in cases where data on distribution of employees by country was incomplete, a supplementary questionnaire was sent out.

Sources of uncertainty

Some uncertainty is related to whether a total population can be defined. In the study year 2006, there were 300 new group parents whilst 231 left. The problems involved in covering the frame are further commented on under the heading below.

Uncertainty also occurs because the annual reports which are the basis for the study do not always provide the information required by the Swedish Annual Accounts Act.

As in most studies, some uncertainty is connected with the registration and processing of data.

Coverage of the frame

Overrepresentation, in principle, can not occur since data on the number of employees is obtained from publicly available annual group accounts – provided these figures are themselves correct. Underrepresentation can occur as a result of incomplete descriptions in the annual reports of the parent enterprise's control of affiliates, and also because a parent enterprise with affiliates abroad is in such cases not part of the study.

Measuring instruments

The main method of data collection is visual scrutiny of the official annual reports obtained from Bolagsverket (the Swedish Companies Registration Office). Basic data registration is carried out by MM Partner which has extensive experience in registering annual accounts. As far as the current data is concerned, there is no standardized presentation format in the annual reports, the work thus generally involves scrutinising lengthy notes to the annual reports.

In those cases where the annual reports of large groups provide insufficient information, supplementary data is obtained through postal questionnaires. In order to determine the need for supplementary questionnaires, priority was given to reviewing the annual reports of groups with at least 500 employees abroad as the first stage in each year's study. In the

2006 survey, a supplementary questionnaire was sent to 10 large groups, of which six responded.

Since 2005 the quality of the survey has been enhanced. This is achieved by carrying out an additional examination of annual reports, and also for those groups where data on the number of foreign employees is lacking, an estimate is made based on the total number of employees in the group and the number in the Swedish affiliates. In total, about 500 groups have been supplemented with data on employees abroad and in Sweden. This led to a further increase of slightly more than 500 groups with a total of approximately 18 000 employees abroad, and 27 000 employees in Sweden. This quality improvement makes comparisons over time more difficult, for further details see "Comparability over time".

Non-response

Total non responses may occur if enterprises have not submitted annual reports to Bolagsverket (Swedish Companies Registration Office). Total non-response today is very small and can be assumed to have a highly limited impact on the result. Different types of partial non-response occur when groups do not present sufficiently detailed information. Instead of disaggregating by country, some enterprises only report the total number of employees, the number of employees abroad or the number of employees per world region. Partial non-response is affected by the extent to which groups comply with Chapter 5, Article 18 of the Swedish Annual Accounts Act (SFS 1995:1554). In the case of large groups that do not respond to the supplementary questionnaire, a breakdown of the number of employees is wherever possible based on the country breakdown in the preceding year.

It is not possible to quantify precisely non-response in this study, but it is possible to state that non-response is relatively limited since administrative material provides the basis for the study (publicly available annual reports from Bolagsverket).

As regards smaller enterprises, annual reports are more transparent and information on employees abroad is thus easier to find. This non-response has also decreased since 2005.

Processing

After basic data registration a number of post-checking operations are carried out. For example, general comparisons are made between the number of employees in Sweden as shown in the survey and a simple aggregation of the number of employees in the limited liability companies per group. For groups with Swedish limited liability companies as the parent enterprise, an estimate can also be made of the number of employees abroad by subtracting the figure for employees for the Swedish part of the group from the total number of employees in the group.

Assumptions of the model

The Swedish Annual Accounts Act (SFS 1995:1 554) defines the meaning of the concept of "group" in Chapter 1, Article 4. A company is a parent enterprise, and a legal entity is an affiliate if the parent enterprise owns more than half the voting rights of all the shares in the affiliate. There are also supplementary rules which, simply put, mean that the same applies when an enterprise, through agreements or similar means, exercises a determining influence over another enterprise.

A group is made up of a group head and its affiliates. A parent enterprise may itself be the affiliate of another enterprise. In such a case, it is then defined as a sub-group. The

terminology that ITPS applies means that the controlling institutional unit at the "highest level" in the group is called the group head, whilst the others are called parent enterprises.

The Swedish Annual Accounts Act defines the obligation to produce consolidated group accounts (Chapter 7). Essentially, all group heads are obliged to provide consolidated group accounts with one exception. The exception applies if the number of employees in the group amounts to a maximum of 10 on average over the past two financial years and if the balance sheet total amounts to a maximum of SEK 24 million on the balance day of the most recent financial year (i.e. 10/24 enterprise).

The requirement to provide consolidated group accounts for sub-groups does not apply in the following cases:

- if the group head provides consolidated group accounts covering the parent enterprise and its affiliates
- the group parent is subject to legislation in the EEA area.

As a result, foreign controlled enterprise groups with their group head domiciled in the EEA are not required to provide consolidated group accounts in Sweden.

The industry classification of a group is determined on the basis of "majority criteria" of the Swedish group's activities. This means that the group is assigned to an industry in accordance with the business operations where the group has most employees in Sweden. The industrial classification can thus be misleading in cases where business operations abroad are more substantial and have a different industrial composition compared to what they have in Sweden.

Sometimes during one and the same survey year, a company's annual accounts may be registered twice. This may arise, for example, if an enterprise is taken over during the year and thus changes its status from being an independent group or part of a group to being part of a different group. In such cases the assumption is made for small enterprises/groups that the situation at the beginning of the year applies to the whole year. For large groups, this is determined on a case to case basis.

Comparability of the statistics

Comparability over time

Since the data refers to groups, changes in the number of employees are affected not only by changes in actual employment, but above all by changes in the structure of the groups over the years. Thus the effects of acquisitions, sales, mergers and closures of companies are included in the data for changes in the number of employees.

Comparability between the studies carried out in 2005 and 2006 is good. Comparability between the studies of 2005 and 2006, and earlier years, is made more difficult as a result of changes in how statistics have been processed since 2005, see above. For example, a large part of the increase in the number of groups between 2004 and 2005 may be explained by changes in measuring and data collection methods.

A summary of the changes from the previous year is provided in the table below.

Table 1 Changes in the number of enterprise groups and number of employees between 2005 and 2006.

	Number		Number employees	
	Groups	Sweden	Rest of the world	Total
		456		1 440
Result 2006 for groups in both years	968	886	983 642	528
		452		1 389
Result 2005 for groups in both years	968	825	936 622	447
Change		4 061	47 020	51 081
New groups in 2006	300	39 369	38 055	77 424
Result 2005 for groups not included in 2006	231	37 022	59 549	96 571

Comparability between groups

No other collated statistics are available in Sweden that provide comparability with the statistics on Swedish controlled groups with affiliates abroad. Parts of the statistics presented in this report are reproduced in other surveys and reports on the statistical area "International enterprises".

Coherence with other statistics

The statistics can be related to other statistics on enterprises, with the qualification that comparability is only possible with regard to the Swedish operations of the groups.

Similar but not directly comparable statistics are produced by a number of countries in Europe and the OECD countries.

Definitions and sources

The survey is based on the annual reports of the group heads, which are publicly available from the Swedish Companies Registration Office (Bolagsverket).

A group is defined as Swedish controlled *if the group head at the top level in the group structure is a Swedish legal entity.*

A *group head* is the parent company at the highest level in the group, that is a parent company which is not the affiliate of some other enterprise. A *parent enterprise* is an enterprise controlling one or more affiliates, and an *affiliate* is an enterprise which is more than 50 per cent controlled by another enterprise or where another enterprise has a dominant influence.

The number of employees is the average number of employees during the accounting year.

Country of location is the country where a group has an affiliate and a least one employee.

Degree of internationalisation is the number of employees abroad in relation to the total number of employees.

Industry classification is determined by means of so-called majority criteria. The industry in the Swedish parts of a group where most employees are working determines the group's industry classification. If a group is classified on the basis of its Swedish operations alone, this is because insufficient data is provided about the non-Swedish parts of the group's operations in the annual reports.

Manufacturing groups are defined as belonging to the main groups 15-37 in accordance with SNI 2002.

Service groups cover all groups belonging to the main groups 50-99 in accordance with SNI 2002.

Other groups are defined as those that fall within the main categories 01-14 and 40-45 according to SNI 2002.

The industry classification has been carried out in accordance with the Swedish Standard Classification of Economic Activities SNI 2002, which is based on the statistical classification of economic activities in the European Union, NACE Rev. 1.1

Countries have been grouped in accordance with the international standard ISO 3166. This standard is maintained by ISO 3166 Maintenance Agency and the UN Statistics Division.

Information services

For further information, contact:

Ann-Sofie Karlsson;

Tel: +46 (0) 63 16 66 11 or e-mail ann-sofie.karlsson@itps.se

Markus Lindvert;

Tel: +46 (0) 63 16 66 36 or e-mail markus.lindvert@itps.se

Swedish controlled groups with most employees abroad

The 80 largest manufacturing groups 2006

AarhusKarlshamn AB	ITAB Shop Concept AB
Albert Bonnier AB	Kinnarps AB
Alfa Laval AB	L E Lundbergföretagen AB
Aros Quality Group AB	Laholm Intressenter AB
Assa Abloy AB	Lindab International AB
Atlas Copco AB	Lindéngruppen AB
Atlet AB	Munters AB
Ballingslöv International AB	Nederman Holding AB
Beijer Alma AB	New Wave Group AB
BIGSO Invest AB	NIBE Industrier AB
BonaKemi AB	Nobia AB
Bong Ljungdahl AB	Nolato AB
Borås Wäfveri AB	Nordic Light Holding AB
Camfil AB	NOTE AB
Cardo AB	O.F. Ahlmark & Co eftr. aktiebolag
Carl Bennet AB	Octapharma Nordic AB
Chotebor AB	PartnerTech AB
Cloetta Fazer AB	Pergo AB
Duni AB	Ratos AB
Dynapac Group AB	Rempo AB
EFG European Furniture Group AB	SAAB AB
Ekamant AB	Sandvik AB
Elanders AB	Santa Maria AB
Electrolux AB	SCANIA AB
Fagerhult AB	SKF AB
Färna Invest AB	SSAB Svenskt Stål AB
G Bergström Förvaltningsaktiebolag	STC Interfinans AB
Getinge AB	Swedish Match AB
Grimaldi Industri AB	Swegmark Invest AB
Gunnebo AB	Svenska Cellulosa AB SCA
Gunnebo Industrier AB	Södra Skogsägarna ekonomisk förening
Haldex AB	Telefonaktiebolaget L M Ericsson
Hexagon AB	Thomas Concrete Group AB
HL Display AB	Tibia Konsult AB
Husqvarna AB	TMG International AB
Höganäs AB	Trading House Scandinavia AB
Indap Sweden AB	Trelleborg AB
Industrivärden AB	Trioplast Industrier AB
Investment AB Kinnevik	V&S Vin & Sprit AB
Investmentaktiebolaget Latour	Volvo AB

The 20 largest manufacturing groups 2006

Albert Bonnier AB	Nobia AB
Alfa Laval AB	Ratos AB
Assa Abloy AB	Sandvik AB
Atlas Copco AB	SCANIA AB
Cardo AB	SKF AB
Electrolux AB	Swedish Match AB
Getinge AB	Svenska Cellulosa AB SCA
Gunnebo AB	Telefonaktiebolaget L M Ericsson
Hexagon AB	Trelleborg AB
Husqvarna AB	Volvo AB

The 40 largest service groups 2006

Axel Johnson Gruppen AB	Poolia AB
Bilia AB	Posten AB
Brodvik AB	Proffice AB
Concordia Bus AB	Ragn-Sells AB
Elekta AB	Rezidor Hotel Group AB
Eniro AB	Securitas AB
Furninova AB	Skandinaviska Enskilda Banken AB
Ibs AB	Sony Ericsson Mobile Communications AB
Ica AB	Stefan Persson Placering AB
Industrial and Financial Systems IFS AB	Stena AB
Indutrade AB	Stena Metall AB
Intrum Justitia AB	Studsvik AB
KappAhl Holding AB	SWECO AB
Lantmännen ek för	Swedbank AB
Lindex AB	Svenska Handelsbanken AB
Meda AB	Tele2 AB
Modern Times Group MTG AB	Teleca AB
Nordea Bank AB	Telelogic AB
Nordimat AB	TeliaSonera AB
Observer AB	Ångpanneföreningen AB

Tables

Table 1a Number of employees in Swedish groups with affiliates abroad 2006 and 2005; by country.

Table 1b Number of employees in Swedish groups with affiliates abroad 2006 and 2005; by world region.

Table 2a Number of employees in Swedish groups with affiliates abroad 2006; by country and gender.

Table 2b Number of employees in Swedish controlled groups with affiliates abroad 2006; by world region and gender.

Table 3 Number Swedish controlled groups with affiliates abroad 2006 and 2005; by country of location.

Table 4 Number of employees in Swedish controlled service groups with affiliates abroad and in foreign enterprises in Sweden 2006.

Table 5 Number of groups and number of employees in Swedish controlled groups with affiliates abroad 2006 and 2005; by group size in Sweden.

Table 6a Number of employees in Swedish groups with affiliates abroad 2006; by country and group size in Sweden.

Table 6b Number of employees in Swedish controlled groups with affiliates abroad 2005; by country and group size in Sweden.

Table 7a Number of employees in Swedish groups with affiliates abroad 2006; by country groups and the group's industry classification in Sweden.

Table 7b Number of employees in Swedish controlled groups with affiliates abroad 2005; by country groups and the group's industry classification in Sweden.

Table 7c Number of employees in Swedish controlled groups with affiliates abroad 2006; by country group and group's industry classification in Sweden.

Table 7d Number of employees in Swedish controlled groups with affiliates abroad 2005; by country group and by groups' industry classification in Sweden.

Table 8a Number of employees in Swedish groups in manufacturing industry with affiliates abroad in 2006; by country and gender.

Table 8b Number of employees in Swedish controlled groups in the service sector with affiliates abroad 2006, by country and gender.

Table 9a Number of employees in Swedish groups with affiliates abroad 2006; by groups' industry classification in Sweden.

Table 9b Number of employees in Swedish controlled groups with affiliates abroad 2005; by groups' industry classification in Sweden.

Table 10 Number of employees in the 80 largest Swedish controlled manufacturing groups with affiliates abroad 2006 and 2005.

Table 11 Number of employees in the 20 largest Swedish controlled manufacturing groups with affiliates abroad 2006 and 2005.

Table 12 Number of employees in the 40 largest Swedish controlled service groups with affiliates abroad 2006 and 2005.

Table 13a Export of goods from all Swedish controlled groups with affiliates abroad 2006; SEK million.

Table 13b Imports of goods to all Swedish controlled groups with affiliates abroad 2006; SEK million.

Table 1a Number of employees in Swedish groups with affiliates abroad 2006 and 2005; by country.

Country of location	Number employees			Proportion of total number employees abroad	
	2006	2005	Change(%)	2006	2005
EU15 (excl. Sweden)	447 409	446 471	0,2	43,8	44,8
EU25 (excl. Sweden)	549 997	537 815	2,3	53,8	54,0
Belgium	17 761	16 905	5,1	1,7	1,7
Cyprus	48	13	269,2	0,0	0,0
Denmark	44 461	45 044	-1,3	4,4	4,5
Estonia	17 696	16 671	6,1	1,7	1,7
Finland	49 171	51 551	-4,6	4,8	5,2
France	67 531	69 702	-3,1	6,6	7,0
Greece	1 119	1 117	0,2	0,1	0,1
Ireland	3 701	3 424	8,1	0,4	0,3
Italy	27 955	27 015	3,5	2,7	2,7
Latvia	9 520	8 023	18,7	0,9	0,8
Lithuania	11 258	9 772	15,2	1,1	1,0
Luxembourg	1 480	1 175	26,0	0,1	0,1
Malta	872	860	1,4	0,1	0,1
Netherlands	19 428	19 275	0,8	1,9	1,9
Poland	37 139	31 527	17,8	3,6	3,2
Portugal	9 473	8 855	7,0	0,9	0,9
Slovakia	709	1 132	-37,4	0,1	0,1
Slovenia	513	354	44,9	0,1	0,0
Spain	42 638	40 642	4,9	4,2	4,1
UK	59 117	60 765	-2,7	5,8	6,1
Czeck Republic	16 916	16 076	5,2	1,7	1,6
Germany	94 347	92 143	2,4	9,2	9,2
Hungary	7 917	6 916	14,5	0,8	0,7
Austria	9 227	8 858	4,2	0,9	0,9
<i>Others OECD</i>					
Australia	10 391	11 858	-12,4	1,0	1,2
Iceland	48	19	152,6	0,0	0,0
Japan	3 878	3 872	0,2	0,4	0,4
Canada	17 942	18 135	-1,1	1,8	1,8
Mexico	16 527	14 816	11,5	1,6	1,5
Norway	50 077	45 987	8,9	4,9	4,6
New Zealand	1 438	1 690	-14,9	0,1	0,2
Switzerland	7 907	7 391	7,0	0,8	0,7
South Korea	2 966	3 007	-1,4	0,3	0,3
Turkey	4 063	1 414	187,3	0,4	0,1
USA	186 228	200 426	-7,1	18,2	20,1
OECD total (excl. Sweden)	811 555	810 737	0,1	79,4	81,4
<i>Other larger countries</i>					
Brazil	23 532	19 231	22,4	2,3	1,9
India	9 928	11 249	-11,7	1,0	1,1
China	32 603	23 902	36,4	3,2	2,4
Russia	8 256	6 108	35,2	0,8	0,6
Rest of the world	1 021 697	996 171	2,6	100,0	100,0
Sweden	496 255	489 847	1,3	48,6	49,2
Total	1 517 952	1 486 018	2,1	148,6	149,2

Table 1b Number of employees in Swedish controlled groups with affiliates abroad 2006 and 2005; by world region.

World region	Number employees			Proportion of total number employees abroad	
	2006	2005	Change (%)	2006	2005
Europe	633 215	611 689	3,5	62	61,4
Northern Europe	245 517	242 677	1,2	24	24,4
Western Europe	217 681	215 449	1,0	21,3	21,6
Southern Europe	83 060	79 314	4,7	8,1	8,0
Eastern Europe	80 179	70 149	14,3	7,8	7,0
<i>Europe unspecified</i>	6 778	4 100	65,3	0,7	0,4
America	271 044	278 846	-2,8	26,5	28,0
North America	205 997	219 263	-6,1	20,2	22,0
South America	42 027	38 351	9,6	4,1	3,8
Central America	18 669	17 156	8,8	1,8	1,7
Caribbean islands	4 351	4 076	6,7	0,4	0,4
<i>America unspecified</i>					
Asia	77 412	66 663	16,1	7,6	6,7
Eastern Asia	41 016	34 061	20,4	4	3,4
Southern Central Asia	15 838	15 490	2,2	1,6	1,6
South East Asia	13 348	13 476	-0,9	1,3	1,4
West Asia	6 801	3 535	92,4	0,7	0,4
<i>Asia unspecified</i>	409	101	305,0	0	0,0
Africa	11 542	11 010	4,8	1,1	1,1
South Africa	6 985	6 610	5,7	0,7	0,7
Central-East Africa	2 039	2 237	-8,9	0,2	0,2
North Africa	1 339	1 874	-28,5	0,1	0,2
West Africa	325	284	14,4	0	0,0
<i>Africa unspecified</i>	854	5	16 980,0	0,1	0,0
Oceania	13 264	13 628	-2,7	1,3	1,4
Rest of the world	1 021 697	996 171	2,6	100	100,0
<i>Abroad Unspecified</i>	15 220	14 335	6,2	1,5	1,4

Table 2a Number of employees in Swedish groups with affiliates abroad 2006; by country and gender.

Country of location	Number employees			Proportion in per cent		
	Women	Men	Total	Women	Men	Not classified
EU15 (excl. Sweden)	124 225,0	293 621,0	447 409,0	27,8	65,6	6,6
EU25 (excl. Sweden)	153 967,0	344 010,0	549 997,0	28,0	62,5	9,5
Belgium	4 659,0	12 466,0	17 761,0	26,2	70,2	3,6
Cyprus	5,0	43,0	48,0	10,4	89,6	0,0
Denmark	14 556,0	27 859,0	44 461,0	32,7	62,7	4,6
Estonia	4 880,0	4 916,0	17 696,0	27,6	27,8	44,6
Finland	18 929,0	28 884,0	49 171,0	38,5	58,7	2,8
France	15 365,0	48 092,0	67 531,0	22,8	71,2	6,0
Greece	225,0	779,0	1 119,0	20,1	69,6	10,3
Ireland	846,0	2 463,0	3 701,0	22,9	66,5	10,6
Italy	4 515,0	15 025,0	27 955,0	16,2	53,7	30,1
Latvia	3 413,0	2 597,0	9 520,0	35,9	27,3	36,9
Lithuania	4 408,0	3 474,0	11 258,0	39,2	30,9	30,0
Luxembourg	481,0	843,0	1 480,0	32,5	57,0	10,5
Malta	205,0	667,0	872,0	23,5	76,5	0,0
Netherlands	5 035,0	12 847,0	19 428,0	25,9	66,1	8,0
Poland	10 561,0	23 276,0	37 139,0	28,4	62,7	8,9
Portugal	2 080,0	7 137,0	9 473,0	22,0	75,3	2,7
Slovakia	224,0	430,0	709,0	31,6	60,6	7,8
Slovenia	233,0	259,0	513,0	45,4	50,5	4,1
Spain	11 756,0	28 784,0	42 638,0	27,6	67,5	4,9
UK	15 142,0	40 913,0	59 117,0	25,6	69,2	5,2
Czeck Republic	4 620,0	12 080,0	16 916,0	27,3	71,4	1,3
Germany	27 484,0	61 853,0	94 347,0	29,1	65,6	5,3
Hungary	1 193,0	2 647,0	7 917,0	15,1	33,4	51,5
Austria	3 152,0	5 676,0	9 227,0	34,2	61,5	4,3
<i>Others OECD</i>						
Australia	1 598,0	6 217,0	10 391,0	15,4	59,8	24,8
Iceland	6,0	23,0	48,0	12,5	47,9	39,6
Japan	930,0	2 833,0	3 878,0	24,0	73,1	3,0
Canada	3 357,0	12 850,0	17 942,0	18,7	71,6	9,7
Mexico	3 751,0	9 673,0	16 527,0	22,7	58,5	18,8
Norway	17 256,0	30 349,0	50 077,0	34,5	60,6	4,9
New Zealand	332,0	1 036,0	1 438,0	23,1	72,0	4,9
Switzerland	2 511,0	4 382,0	7 907,0	31,8	55,4	12,8
South Korea	464,0	2 470,0	2 966,0	15,6	83,3	1,1
Turkey	319,0	3 669,0	4 063,0	7,9	90,3	1,8
USA	49 457,0	125 124,0	186 228,0	26,6	67,2	6,3
OECD total (excl. Sweden)	220 804,0	530 680,0	811 555,0	27,2	65,4	7,4
<i>Other larger countries</i>						
Brazil	2 244,0	15 710,0	23 532,0	9,5	66,8	23,7
India	523,0	8 449,0	9 928,0	5,3	85,1	9,6
China	11 893,0	17 522,0	32 603,0	36,5	53,7	9,8
Russia	2 213,0	4 853,0	8 256,0	26,8	58,8	14,4
Rest of the world	273 480,0	649 325,0	1 021 697,0	26,8	63,6	9,7
Sweden	146 246,0	296 784,0	496 255,0	29,5	59,8	10,7
Total	419 726,0	946 109,0	1 517 952,0	27,7	62,3	10,0

Table 2b Number of employees in Swedish controlled groups with affiliates abroad 2006; by world region and gender.

World region	Number employees			Proportion in per cent		
	Women	Men	Total	Women	Men	Not classified
Europe	181 366	392 576	633 215	28,6	62	9,4
Northern Europe	79 591	141 729	245 517	32,4	57,7	9,9
Western Europe	58 687	146 159	217 681	27	67,1	5,9
Southern Europe	19 170	52 953	83 060	23,1	63,8	13,2
Eastern Europe	21 759	47 251	80 179	27,1	58,9	13,9
<i>Europe unspecified</i>	2 159	4 484	6 778	31,9	66,2	2
America	64 354	184 281	271 044	23,7	68	8,3
North America	53 104	139 511	205 997	25,8	67,7	6,5
South America	4 167	31 952	42 027	9,9	76	14,1
Central America	4 707	10 857	18 669	25,2	58,2	16,6
Caribbean islands	2 376	1 961	4 351	54,6	45,1	0,3
<i>America unspecified</i>						
Asia	20 473	49 176	77 412	26,4	63,5	10
Eastern Asia	13 846	23 740	41 016	33,8	57,9	8,4
Southern Central Asia	1 368	12 914	15 838	8,6	81,5	9,8
South East Asia	4 146	6 584	13 348	31,1	49,3	19,6
West Asia	982	5 660	6 801	14,4	83,2	2,3
Asia unspecified	131	278	409	32	68	0
Africa	2 201	9 026	11 542	19,1	78,2	2,7
South Africa	1 697	4 973	6 985	24,3	71,2	4,5
Central-East Africa	126	1 913	2 039	6,2	93,8	0
North Africa	204	1 135	1 339	15,2	84,8	0
West Africa	50	275	325	15,4	84,6	0
<i>Africa unspecified</i>	124	730	854	14,5	85,5	0
Oceania	2 092	8 526	13 264	15,8	64,3	19,9
Rest of the world	273 480	649 325	1 021 697	26,8	63,6	9,7
<i>Abroad Unspecified</i>	2 994	5 740	15 220	19,7	37,7	42,6

Table 3 Number of Swedish controlled groups with affiliates abroad 2006 and 2005; by country of location.

Country of location	Number of groups			Proportion of total number groups	
	2006	2005	Change(%)	2006	2005
EU15 (excl. Sweden)	654	590	10,8	51,6	49,2
EU25 (excl. Sweden)	792	714	10,9	62,5	59,5
Belgium	76	72	5,6	6,0	6,0
Cyprus	3	2	50,0	0,2	0,2
Denmark	305	301	1,3	24,1	25,1
Estonia	115	109	5,5	9,1	9,1
Finland	288	276	4,3	22,7	23,0
France	133	137	-2,9	10,5	11,4
Greece	16	14	14,3	1,3	1,2
Ireland	32	30	6,7	2,5	2,5
Italy	66	70	-5,7	5,2	5,8
Latvia	68	69	-1,4	5,4	5,8
Lithuania	60	49	22,4	4,7	4,1
Luxembourg	17	16	6,3	1,3	1,3
Malta	8	5	60,0	0,6	0,4
Netherlands	106	111	-4,5	8,4	9,3
Poland	167	155	7,7	13,2	12,9
Portugal	43	39	10,3	3,4	3,3
Slovakia	22	22	0,0	1,7	1,8
Slovenia	15	11	36,4	1,2	0,9
Spain	81	74	9,5	6,4	6,2
UK	260	250	4,0	20,5	20,9
Czech Republic	54	58	-6,9	4,3	4,8
Germany	234	241	-2,9	18,5	20,1
Hungary	51	48	6,3	4,0	4,0
Austria	41	45	-8,9	3,2	3,8
<i>Others OECD</i>					
Australia	49	52	-5,8	3,9	4,3
Iceland	2	1	100,0	0,2	0,1
Japan	52	50	4,0	4,1	4,2
Canada	53	53	0,0	4,2	4,4
Mexico	26	27	-3,7	2,1	2,3
Norway	402	365	10,1	31,7	30,4
New Zealand	16	15	6,7	1,3	1,3
Switzerland	64	72	-11,1	5,0	6,0
South Korea	27	26	3,8	2,1	2,2
Turkey	17	16	6,3	1,3	1,3
USA	250	219	14,2	19,7	18,3
OECD total (excl. Sweden)	951	796	19,5	75,0	66,4
<i>Other larger countries</i>					
Brazil	36	37	-2,7	2,8	3,1
India	30	29	3,4	2,4	2,4
China	97	80	21,3	7,6	6,7
Russia	64	59	8,5	5,0	4,9
Total	1 268	1 199	5,8	100,0	100,0

Table 4 Number of employees in Swedish controlled service groups with affiliates abroad and in foreign enterprises in Sweden 2006.

Countries with the largest number of employees			
Swedish groups		Foreign enterprises in Sweden	
Country	Employees	Country	Employees
USA	186 228	USA	109 620
Germany	94 347	UK	67 138
France	67 531	Finland	56 577
UK	59 117	Netherlands	51 308
Norway	50 077	Germany	50 189
Finland	49 171	France	42 343
Denmark	44 461	Norway	42 093
Spain	42 638	Denmark	36 038
Poland	37 139	Switzerland	23 605
China	32 603	Luxembourg	14 809
Italy	27 955	Japan	6 461
Brazil	23 532	Jersey	4 638
Netherlands	19 428	Austria	4 376
Canada	17 942	Italy	3 804
Belgium	17 761	Canada	3 803
Others	224 045	Others ²	46 089
Unspecified	27 722	Unspecified	9 824
Total	1 021 697	Total	572 715

Notes:

1. The data is obtained from the report "Foreign controlled enterprises 2006", ITPS S2007:005.

2. This category also includes enterprises where foreign control is located in two or more countries and where the total voting rights of the foreign institutional controlling units exceeds 50 per cent, see above mentioned study for further information on different definitions concerning foreign controlled enterprises.

Table 5 Number of groups and number of employees in Swedish controlled groups with affiliates abroad 2006 and 2005; by group size in Sweden.

Size	Number of groups			Number employees abroad			Number employees in Sweden		
	2006	2005	Change (%)	2006	2005	Change (%)	2006	2005	Change (%)
0-49	647	622	4,0	23 513	19 561	20,2	12 681	11 665	8,7
50-249	386	337	14,5	32 231	25 350	27,1	42 860	38 161	12,3
250-499	90	100	-10,0	45 023	48 275	-6,7	32 341	36 389	-11,1
500-999	64	62	3,2	59 094	56 324	4,9	43 883	43 784	0,2
1000-4999	59	57	3,5	297 919	245 046	21,6	119 770	118 818	0,8
5000-	22	21	4,8	563 917	601 615	-6,3	244 720	241 030	1,5
Total	1 268	1 199	5,8	1 021 697	996 171	2,6	496 255	489 847	1,3

Table 6a Number of employees in Swedish groups with affiliates abroad 2006; by country and group size in Sweden.

Country of location	Size of group					Proportion		
	0-49	50-249	250-499	500-999	1000-4999	5000-	<1000	>1000
EU15 (excl. Sweden)	4 224	12 557	26 484	28 624	127 063	248 457	16,1	83,9
EU25 (excl. Sweden)	12 282	19 864	28 864	33 457	150 765	304 765	17,2	82,8
Belgium	74	260	606	1 667	5 575	9 579	14,7	85,3
Cyprus	30	0	0	0	10	8	62,5	37,5
Denmark	692	1 893	2 709	4 839	10 147	24 181	22,8	77,2
Estonia	2 136	4 467	344	1 340	653	8 756	46,8	53,2
Finland	667	1 765	2 436	4 094	10 063	30 146	18,2	81,8
France	349	969	5 024	3 811	17 024	40 354	15,0	85,0
Greece	0	44	5	18	319	733	6,0	94,0
Ireland	0	54	186	131	1 499	1 831	10,0	90,0
Italy	37	511	1 177	50	17 230	8 950	6,3	93,7
Latvia	765	932	227	191	1 764	5 641	22,2	77,8
Lithuania	963	162	368	371	751	8 643	16,6	83,4
Luxembourg	16	150	46	0	513	755	14,3	85,7
Malta	2	31	0	22	648	169	6,3	93,7
Netherlands	53	511	1 333	1 037	6 168	10 326	15,1	84,9
Poland	3 031	1 277	770	1 893	11 171	18 997	18,8	81,2
Portugal	103	888	759	348	710	6 665	22,1	77,9
Slovakia	80	38	55	63	171	302	33,3	66,7
Slovenia	8	3	39	94	303	66	28,1	71,9
Spain	119	480	3 823	1 348	8 526	28 342	13,5	86,5
UK	1 132	2 452	3 970	6 229	17 490	27 844	23,3	76,7
Czech Republic	926	193	397	360	3 596	11 444	11,1	88,9
Germany	883	2 501	3 785	4 563	28 338	54 277	12,4	87,6
Hungary	117	204	180	499	4 635	2 282	12,6	87,4
Austria	99	79	625	489	3 461	4 474	14,0	86,0
<i>Others OECD</i>								
Australia	25	98	471	235	4 982	4 580	8,0	92,0
Iceland	19	0	0	29	0	0	100,0	0,0
Japan	30	135	187	35	2 031	1 460	10,0	90,0
Canada	45	142	1 096	49	4 464	12 146	7,4	92,6
Mexico	188	162	189	319	8 064	7 605	5,2	94,8
Norway	1 447	2 175	2 357	4 461	14 700	24 937	20,8	79,2
New Zealand	0	3	5	10	628	792	1,3	98,7
Switzerland	76	104	414	74	5 005	2 234	8,4	91,6
South Korea	6	58	38	5	949	1 910	3,6	96,4
Turkey	1	41	7	85	518	3 411	3,3	96,7
USA	768	2 950	4 692	3 865	47 302	126 651	6,6	93,4
OECD total (excl. Sweden)	10 983	20 137	37 342	40 606	235 279	467 208	13,4	86,6
Others	9 154	8 420	6 137	17 751	52 351	88 607	22,7	77,3
Unspecified	3 380	3 674	1 540	737	10 289	8 102	33,7	66,3
Rest of the world	23 517	32 231	45 019	59 094	297 919	563 917	15,6	84,4
Sweden	12 681	42 860	32 341	43 883	119 770	244 720	26,6	73,4
Total	36 198	75 091	77 360	102 977	417 689	808 637	19,2	80,8

Table 6b Number of employees in Swedish controlled groups with affiliates abroad 2005; by country and group size in Sweden.

Country of location	Size of group						Proportion	
	0-49	50-249	250-499	500-999	1000-4999	5000-	<1000	>1000
EU15 (excl. Sweden)	4 300	10 838	24 328	27 136	121 619	258 250	14,9	85,1
EU25 (excl. Sweden)	11 795	14 496	30 985	30 735	136 526	313 278	16,4	83,6
Belgium	34	225	878	653	5 497	9 618	10,6	89,4
Cyprus	0	0	0	0	11	2	0,0	100,0
Denmark	606	2 145	2 977	5 314	10 925	23 077	24,5	75,5
Estonia	2 140	1 204	4 074	587	687	7 979	48,0	52,0
Finland	479	1 624	2 649	4 189	11 974	30 636	17,3	82,7
France	347	650	5 020	2 871	17 897	42 917	12,8	87,2
Greece	0	6	6	40	83	982	4,7	95,3
Ireland	0	20	225	26	1 302	1 851	7,9	92,1
Italy	76	158	1 075	1 498	8 973	15 235	10,4	89,6
Latvia	835	800	262	156	1 491	4 479	25,6	74,4
Lithuania	522	362	88	335	184	8 281	13,4	86,6
Luxembourg	1	107	47	0	278	742	13,2	86,8
Malta	1	0	0	10	719	130	1,3	98,7
Netherlands	146	585	1 361	830	5 976	10 377	15,2	84,8
Poland	3 036	1 024	1 282	1 503	7 469	17 213	21,7	78,3
Portugal	245	113	278	732	447	7 040	15,4	84,6
Slovakia	0	33	128	15	103	853	15,5	84,5
Slovenia	0	0	0	76	193	85	21,5	78,5
Spain	76	288	822	949	9 743	28 764	5,3	94,7
UK	1 495	2 765	4 164	4 732	20 492	27 117	21,7	78,3
Czech Republic	806	147	640	447	3 031	11 005	12,7	87,3
Germany	757	2 091	4 179	4 782	25 070	55 264	12,8	87,2
Hungary	155	88	183	470	1 019	5 001	13,0	87,0
Austria	38	61	647	520	2 962	4 630	14,3	85,7
<i>Others OECD</i>								
Australia	1	155	307	446	2 339	8 610	7,7	92,3
Iceland	19	0	0	0	0	0	100,0	0,0
Japan	19	133	175	170	1 901	1 474	12,8	87,2
Canada	63	159	1 243	138	2 457	14 075	8,8	91,2
Mexico	13	12	134	1 003	5 064	8 590	7,8	92,2
Norway	1 389	2 045	2 645	3 186	12 815	23 907	20,1	79,9
New Zealand	0	1	4	20	643	1 022	1,5	98,5
Switzerland	59	133	431	277	3 267	3 224	12,2	87,8
South Korea	0	45	32	159	858	1 913	7,8	92,2
Turkey	0	0	28	68	638	680	6,8	93,2
USA	521	2 148	5 252	11 100	29 246	152 159	9,5	90,5
OECD total (excl. Sweden)	10 381	16 961	36 812	46 138	192 469	507 976	13,6	86,4
Others	5 990	4 668	9 832	6 232	45 332	92 344	16,3	83,7
Unspecified	3 190	3 721	1 631	3 954	7 245	1 295	59,4	40,6
Rest of the world	19 561	25 350	48 275	56 324	245 046	601 615	15,0	85,0
Sweden	11 665	38 161	36 389	43 784	118 818	241 030	26,5	73,5
Total	31 226	63 511	84 664	100 108	363 864	842 645	18,8	81,2

Table 7a Number of employees in Swedish groups with affiliates abroad 2006; by country and the group's industry classification in Sweden.

Country of location	Manufacturing	Services	Business sector total	Proportion manufacturing	Proportion services
EU15 (excl. Sweden)	214 800	185 256	447 409	48,0	41,4
EU25 (excl. Sweden)	261 590	223 892	549 997	47,6	40,7
Belgium	10 703	6 900	17 761	60,3	38,8
Cyprus	18	30	48	37,5	62,5
Denmark	15 801	22 998	44 461	35,5	51,7
Estonia	7 521	9 672	17 696	42,5	54,7
Finland	12 476	28 134	49 171	25,4	57,2
France	40 744	25 716	67 531	60,3	38,1
Greece	1 064	55	1 119	95,1	4,9
Ireland	2 487	418	3 701	67,2	11,3
Italy	26 890	1 065	27 955	96,2	3,8
Latvia	3 405	5 918	9 520	35,8	62,2
Lithuania	2 239	9 008	11 258	19,9	80,0
Luxembourg	391	1 089	1 480	26,4	73,6
Malta	669	55	872	76,7	6,3
Netherlands	11 150	8 099	19 428	57,4	41,7
Poland	17 826	10 292	37 139	48,0	27,7
Portugal	1 512	7 468	9 473	16,0	78,8
Slovakia	525	184	709	74,0	26,0
Slovenia	411	102	513	80,1	19,9
Spain	12 468	26 142	42 638	29,2	61,3
UK	33 404	21 150	59 117	56,5	35,8
Czech Republic	7 307	2 338	16 916	43,2	13,8
Germany	39 766	32 739	94 347	42,1	34,7
Hungary	6 869	1 037	7 917	86,8	13,1
Austria	5 944	3 283	9 227	64,4	35,6
<i>Others OECD</i>					
Australia	9 965	374	10 391	95,9	3,6
Iceland	0	48	48	0,0	100,0
Japan	2 655	1 223	3 878	68,5	31,5
Canada	10 128	7 705	17 942	56,4	42,9
Mexico	12 045	3 886	16 527	72,9	23,5
Norway	10 239	30 822	50 077	20,4	61,5
New Zealand	1 438	0	1 438	100,0	0,0
Switzerland	4 882	2 999	7 907	61,7	37,9
South Korea	2 803	163	2 966	94,5	5,5
Turkey	1 235	2 828	4 063	30,4	69,6
USA	74 222	103 577	186 228	39,9	55,6
OECD total (excl. Sweden)	376 939	352 732	811 555	46,4	43,5
<i>Other larger countries</i>					
Brazil	19 969	46	23 532	84,9	0,2
India	9 453	443	9 928	95,2	4,5
China	29 919	2 592	32 603	91,8	8,0
Russia	4 517	3 202	8 256	54,7	38,8
Rest of the world	517 455	409 119	1 021 697	50,6	40,0
Sweden	219 422	221 690	496 255	44,2	44,7
Total	736 877	630 809	1 517 952	48,5	41,6

Notes: Industry is defined in accordance with SNI 2002; manufacturing industry as the main groups 15-37; the service sector corresponds to 50-99, and the whole of the business sector corresponds to all groups including those with unknown industry classification.

Table 7b Number of employees in Swedish controlled groups with affiliates abroad 2005; by country groups and the group's industry classification in Sweden.

Country of location	Manufacturing	Services	Business sector total	Proportion manufacturing	Proportion services
EU15 (excl. Sweden)	211 811	194 903	446 471	47,4	43,7
EU25 (excl. Sweden)	252 697	229 201	537 815	47,0	42,6
Belgium	11 010	5 878	16 905	65,1	34,8
Cyprus	13	0	13	100,0	0,0
Denmark	15 159	24 994	45 044	33,7	55,5
Estonia	7 235	8 975	16 671	43,4	53,8
Finland	11 607	31 480	51 551	22,5	61,1
France	41 374	28 126	69 702	59,4	40,4
Greece	1 085	32	1 117	97,1	2,9
Ireland	2 302	436	3 424	67,2	12,7
Italy	26 103	912	27 015	96,6	3,4
Latvia	3 162	4 647	8 023	39,4	57,9
Lithuania	1 361	8 400	9 772	13,9	86,0
Luxembourg	214	961	1 175	18,2	81,8
Malta	731	11	860	85,0	1,3
Netherlands	11 786	7 465	19 275	61,1	38,7
Poland	13 689	9 555	31 527	43,4	30,3
Portugal	1 745	7 109	8 855	19,7	80,3
Slovakia	1 094	38	1 132	96,6	3,4
Slovenia	269	85	354	76,0	24,0
Spain	12 743	27 897	40 642	31,4	68,6
UK	31 001	26 048	60 765	51,0	42,9
Czech Republic	7 102	1 912	16 076	44,2	11,9
Germany	39 929	30 460	92 143	43,3	33,1
Hungary	6 230	675	6 916	90,1	9,8
Austria	5 753	3 105	8 858	64,9	35,1
<i>Others OECD</i>					
Australia	11 160	698	11 858	94,1	5,9
Iceland		19	19		100,0
Japan	2 511	1 361	3 872	64,9	35,1
Canada	11 009	6 931	18 135	60,7	38,2
Mexico	11 317	3 465	14 816	76,4	23,4
Norway	8 215	29 894	45 987	17,9	65,0
New Zealand	1 681	9	1 690	99,5	0,5
Switzerland	4 360	3 025	7 391	59,0	40,9
South Korea	2 875	132	3 007	95,6	4,4
Turkey	1 406	8	1 414	99,4	0,6
USA	84 968	107 337	200 426	42,4	53,6
OECD total (excl. Sweden)	379 428	359 962	810 737	46,8	44,4
<i>Other larger countries</i>					
Brazil	17 089	50	19 231	88,9	0,3
India	10 845	264	11 249	96,4	2,3
China	22 651	1 186	23 902	94,8	5,0
Russia	3 800	1 470	6 108	62,2	24,1
Rest of the world	503 177	408 875	996 171	50,5	41,0
Sweden	212 179	227 209	489 847	43,3	46,4
Total	715 356	636 084	1 486 018	48,1	42,8

Notes: Industry is defined in accordance with SNI 2002; manufacturing industry as the main groups 15-37; the service sector corresponds to 50-99, and the whole of the business sector corresponds to all groups including those with unknown industry classification.

Table 7c Number of employees in Swedish controlled groups with affiliates abroad 2006; by country group and by groups' industry classification in Sweden.

World region	Manufacturing	Services	Business sector total	Proportion manufacturing	Proportion services
Europe (excl. Sweden)	290 937	268 011	633 215	45,9	42,3
Northern Europe	87 900	128 308	245 517	35,8	52,3
Western Europe	113 580	80 825	217 681	52,2	37,1
Southern Europe	43 472	34 901	83 060	52,3	42,0
Eastern Europe	44 788	18 396	80 179	55,9	22,9
<i>Europe unspecified</i>	1 197	5 581	6 778	17,7	82,3
America	131 542	120 482	271 044	48,5	44,5
North America	85 453	112 006	205 997	41,5	54,4
South America	27 569	4 572	42 027	65,6	10,9
Central America	14 183	3 890	18 669	76,0	20,8
Caribbean islands	4 337	14	4 351	99,7	0,3
<i>America unspecified</i>					
Asia	65632	11223	77412	84,8	14,5
Eastern Asia	36 515	4 387	41 016	89,0	10,7
Southern Central Asia	13 249	2 556	15 838	83,7	16,1
South East Asia	12 498	440	13 348	93,6	3,3
West Asia	3 073	3 728	6 801	45,2	54,8
<i>Asia unspecified</i>	297	112	409	72,6	27,4
Africa	9 810	981	11 542	85,0	8,5
South Africa	6 784	197	6 985	97,1	2,8
Central-East Africa	1 244	76	2 039	61,0	3,7
North Africa	625	686	1 339	46,7	51,2
West Africa	308	17	325	94,8	5,2
<i>Africa unspecified</i>	849	5	854	99,4	0,6
Oceania	12 809	403	13 264	96,6	3,0
Rest of the world	517 455	409 119	1 021 697	50,6	40,0
<i>Abroad Unspecified</i>	6 725	8 019	15 220	44,2	52,7

Notes: Industry is defined in accordance with SNI 2002; manufacturing industry as the main groups 15-37; the service sector corresponds to 50-99, and the whole of the business sector corresponds to all groups including those with unknown industry classification.

Table 7d Number of employees in Swedish controlled groups with affiliates abroad 2005; by country group and by groups' industry classification in Sweden.

World region	Manufacturing	Services	Business sector total	Proportion manufacturing	Proportion services
Europe (excl. Sweden)	277 266	269 606	611 689	45,3	44,1
Northern Europe	80 440	135 916	242 677	33,1	56,0
Western Europe	114 426	79 020	215 449	53,1	36,7
Southern Europe	43 107	36 074	79 314	54,3	45,5
Eastern Europe	39 224	14 565	70 149	55,9	20,8
<i>Europe unspecified</i>	69	4 031	4 100	1,7	98,3
America	138 884	122 731	278 846	49,8	44,0
North America	95 983	114 964	219 263	43,8	52,4
South America	25 180	4 291	38 351	65,7	11,2
Central America	13 646	3 475	17 156	79,5	20,3
Caribbean islands	4 075	1	4 076	100,0	0,0
<i>America unspecified</i>					
Asia	59825	6137	66663	89,7	9,2
Eastern Asia	30 924	3 072	34 061	90,8	9,0
Southern Central Asia	13 472	1 877	15 490	87,0	12,1
South East Asia	12 525	464	13 476	92,9	3,4
West Asia	2 809	718	3 535	79,5	20,3
<i>Asia unspecified</i>	95	6	101	94,1	5,9
Africa	9 604	345	11 010	87,2	3,1
South Africa	6 327	179	6 610	95,7	2,7
Central-East Africa	1 228	126	2 237	54,9	5,6
North Africa	1 776	27	1 874	94,8	1,4
West Africa	273	8	284	96,1	2,8
<i>Africa unspecified</i>	0	5	5	0,0	100,0
Oceania	12 921	707	13 628	94,8	5,2
Rest of the world	503 177	408 875	996 171	50,5	41,0
<i>Abroad Unspecified</i>	4 677	9 349	14 335	32,6	65,2

Notes: Industry is defined in accordance with SNI 2002; manufacturing industry as the main groups 15-37; the service sector corresponds to 50-99, and the whole of the business sector corresponds to all groups including those with unknown industry classification.

Table 8a Number of employees in Swedish groups in manufacturing industry with affiliates abroad 2006; by country and gender.

Country of location	Number employees			Proportion in per cent		
	Women	Men	Total	Women	Men	Not classified
EU15 (excl. Sweden)	42 861	145 573	214 800	20,0	67,8	12,3
EU25 (excl. Sweden)	56 016	166 583	261 590	21,4	63,7	14,9
Belgium	2 207	7 869	10 703	20,6	73,5	5,9
Cyprus	5	13	18	27,8	72,2	0,0
Denmark	3 880	10 696	15 801	24,6	67,7	7,8
Estonia	1 498	1 551	7 521	19,9	20,6	59,5
Finland	3 339	8 458	12 476	26,8	67,8	5,4
France	8 530	28 191	40 744	20,9	69,2	9,9
Greece	209	758	1 064	19,6	71,2	9,1
Ireland	540	1 555	2 487	21,7	62,5	15,8
Italy	3 965	14 515	26 890	14,7	54,0	31,3
Latvia	1 335	1 074	3 405	39,2	31,5	29,3
Lithuania	1 206	907	2 239	53,9	40,5	5,6
Luxembourg	30	310	391	7,7	79,3	13,0
Malta	177	492	669	26,5	73,5	0,0
Netherlands	1 581	8 215	11 150	14,2	73,7	12,1
Poland	5 067	10 004	17 826	28,4	56,1	15,5
Portugal	484	822	1 512	32,0	54,4	13,6
Slovakia	140	339	525	26,7	64,6	8,8
Slovenia	156	234	411	38,0	56,9	5,1
Spain	2 261	8 261	12 468	18,1	66,3	15,6
UK	6 721	24 321	33 404	20,1	72,8	7,1
Czech Republic	2 688	4 451	7 307	36,8	60,9	2,3
Germany	7 970	27 126	39 766	20,0	68,2	11,7
Hungary	883	1 945	6 869	12,9	28,3	58,8
Austria	1 144	4 476	5 944	19,2	75,3	5,5
<i>Others OECD</i>						
Australia	1 490	5 919	9 965	15,0	59,4	25,6
Japan	685	1 876	2 655	25,8	70,7	3,5
Canada	1 813	6 594	10 128	17,9	65,1	17,0
Mexico	3 349	5 600	12 045	27,8	46,5	25,7
Norway	2 504	6 702	10 239	24,5	65,5	10,1
New Zealand	332	1 036	1 438	23,1	72,0	4,9
Switzerland	884	2 984	4 882	18,1	61,1	20,8
South Korea	422	2 349	2 803	15,1	83,8	1,1
Turkey	233	927	1 235	18,9	75,1	6,1
USA	18 037	44 968	74 222	24,3	60,6	15,1
OECD total (excl. Sweden)	81 388	241 267	376 939	21,6	64,0	14,4
<i>Other larger countries</i>						
Brazil	2 123	12 291	19 969	10,6	61,6	27,8
India	408	8 191	9 453	4,3	86,6	9,0
China	10 522	16 299	29 919	35,2	54,5	10,4
Russia	1 614	2 538	4 517	35,7	56,2	8,1
Rest of the world	116 655	323 346	517 455	22,5	62,5	15,0
Sweden	61 885	133 339	219 422	28,2	60,8	11,0
Total	178 540	456 685	736 877	24,2	62,0	13,8

Table 8b Number of employees in Swedish controlled groups in the service sector with affiliates abroad 2006; by country and gender.

Country of location	Number employees			Proportion in per cent		
	Women	Men	Total	Women	Men	Not classified
EU15 (excl. Sweden)	72 129	109 936	185 256	38,9	59,3	1,7
EU25 (excl. Sweden)	85 824	125 123	223 892	38,3	55,9	5,8
Belgium	2 423	4 468	6 900	35,1	64,8	0,1
Cyprus	0	30	30	0,0	100,0	0,0
Denmark	9 940	12 243	22 998	43,2	53,2	3,5
Estonia	3 313	2 948	9 672	34,3	30,5	35,3
Finland	14 426	13 029	28 134	51,3	46,3	2,4
France	6 577	19 088	25 716	25,6	74,2	0,2
Greece	16	21	55	29,1	38,2	32,7
Ireland	260	158	418	62,2	37,8	0,0
Italy	550	510	1 065	51,6	47,9	0,5
Latvia	2 058	1 361	5 918	34,8	23,0	42,2
Lithuania	3 201	2 557	9 008	35,5	28,4	36,1
Luxembourg	451	533	1 089	41,4	48,9	9,6
Malta	19	36	55	34,5	65,5	0,0
Netherlands	3 421	4 486	8 099	42,2	55,4	2,4
Poland	3 882	5 909	10 292	37,7	57,4	4,9
Portugal	1 480	5 938	7 468	19,8	79,5	0,7
Slovakia	84	91	184	45,7	49,5	4,9
Slovenia	77	25	102	75,5	24,5	0,0
Spain	8 391	17 599	26 142	32,1	67,3	0,6
UK	7 521	12 929	21 150	35,6	61,1	3,3
Czech Republic	756	1 534	2 338	32,3	65,6	2,1
Germany	14 665	17 734	32 739	44,8	54,2	1,0
Hungary	305	696	1 037	29,4	67,1	3,5
Austria	2 008	1 200	3 283	61,2	36,6	2,3
<i>Others OECD</i>						
Australia	97	257	374	25,9	68,7	5,3
Iceland	6	23	48	12,5	47,9	39,6
Japan	245	957	1 223	20,0	78,3	1,7
Canada	1 536	6 155	7 705	19,9	79,9	0,2
Mexico	391	3 488	3 886	10,1	89,8	0,2
Norway	13 666	15 875	30 822	44,3	51,5	4,2
Switzerland	1 624	1 375	2 999	54,2	45,8	0,0
South Korea	42	121	163	25,8	74,2	0,0
Turkey	86	2 742	2 828	3,0	97,0	0,0
USA	30 293	72 854	103 577	29,2	70,3	0,4
OECD total (excl. Sweden)	125 142	222 013	352 732	35,5	62,9	1,6
<i>Other larger countries</i>						
Brazil	9	14	46	19,6	30,4	50,0
India	114	227	443	25,7	51,2	23,0
China	1 312	1 190	2 592	50,6	45,9	3,5
Russia	441	1 993	3 202	13,8	62,2	24,0
Rest of the world	141 738	246 457	409 119	34,6	60,2	5,1
Sweden	78 296	115 299	221 690	35,3	52,0	12,7
Total	220 034	361 756	630 809	34,9	57,3	7,8

Table 9a Number of employees in Swedish groups with affiliates abroad 2006; by groups' industry classification in Sweden.

Industry	SNI 2002	Number employees		Number groups	Degree of internationalisation (%)	Proportion of total number employees abroad
		Sweden	Rest of the world			
Agriculture, forestry, hunting and fishery; Mining and quarrying ;	01-14	6 767	3 189	10	32,0	0,3
Electricity, gas and hot water supply	40-41	8 585	23 853	3	73,5	2,3
Manufacturing	15-37	219 422	517 455	490	70,2	50,6
Food industry	15-16	9 781	17 242	18	63,8	1,7
Textiles	17	1 222	4 681	17	79,3	0,5
Clothes; dressing and dyeing of fur	18	400	1 184	8	74,7	0,1
Mfr. of leather and leather products	19	589	111	4	15,9	0,0
Manufacture of wood products	20	9 717	7 207	28	42,6	0,7
Pulp, paper and paper products	21	19 416	52 065	17	72,8	5,1
Publishing	22	8 657	9 430	21	52,1	0,9
Chemical industry	23-24	2 668	6 099	24	69,6	0,6
Rubber and plastic products	25	7 962	27 107	31	77,3	2,7
Mfr. non-metallic mineral products	26	2 240	2 823	7	55,8	0,3
Manufacture of basic metals	27	9 585	2 007	8	17,3	0,2
Mfr. metal prods. except machinery and equipment	28	24 878	81 706	70	76,7	8,0
Machinery in addition to below	29	32 770	150 790	102	82,1	14,8
Office machinery and computers	30	1 844	2 223	6	54,7	0,2
Electrical machines and articles	31	3 272	2 846	21	46,5	0,3
Radio, tv comm. equipmt and app.	32	20 899	46 101	9	68,8	4,5
Precision instruments etc	33	3 950	9 462	38	70,5	0,9
Motor vehicles and trailers	34	42 474	79 116	20	65,1	7,7
Manufacture of other transport equipment	35	11 216	3 777	6	25,2	0,4
Other manufacturing industry	36-37	5 882	11 478	35	66,1	1,1
Construction	45	39 791	68 081	30	63,1	6,7
Services	50-99	221 690	409 119	735	64,9	40,0
Sales of motor vehicles and fuel	50	5 978	3 282	16	35,4	0,3
Wholesale and commission trade	51	31 210	27 918	257	47,2	2,7
Retail trade	52	24 415	42 993	37	63,8	4,2
Hotels and restaurants	55	1 382	5 302	8	79,3	0,5
Land transport	60	10 019	1 631	11	14,0	0,2
Sea and air transport	61-62	7 535	5 081	11	40,3	0,5
Travel agencies	63	1 410	783	22	35,7	0,1
Post and telecommunications	64	43 436	22 336	6	34,0	2,2
Financial intermediation	65-67	37 967	46 380	30	55,0	4,5
Real estate activities	70	641	276	15	30,1	0,0
Rental	71	109	143	8	56,7	0,0
Computer and related activities	72	14 254	10 778	106	43,1	1,1
Research and development	73	4 416	7 286	26	62,3	0,7
Other business activities	74	30 950	229 003	154	88,1	22,4
Other services	75-99	7 968	5 927	28	42,7	0,6
Total	00-99	496 255	1 021 697	1 268	67,3	100,0

Table 9b Number of employees in Swedish controlled groups with affiliates abroad 2005; by groups' industry classification in Sweden.

Industry	SNI 2002	Number employees		Number groups	Degree of internationalisation (%)	Proportion of total number employees abroad
		Sweden	Rest of the world			
Agriculture, forestry, hunting and fishery; Mining and quarrying ;	01-14	7 158	3 179	13	30,8	0,3
Electricity, gas and hot water supply	40-41	8 373	23 980	3	74,1	2,4
Manufacturing	15-37	212 179	503 177	464	70,3	50,5
Food industry	15-16	8 037	19 919	18	71,3	2,0
Textiles	17	1 322	4 426	17	77,0	0,4
Clothes; dressing and dyeing of fur	18	298	745	8	71,4	0,1
Mfr. of leather and leather products	19	451	90	3	16,6	0,0
Manufacture of wood products	20	4 550	2 787	26	38,0	0,3
Pulp, paper and paper products	21	19 529	52 546	18	72,9	5,3
Publishing	22	10 045	8 039	22	44,5	0,8
Chemical industry	23-24	2 376	6 096	27	72,0	0,6
Rubber and plastic products	25	8 081	24 388	27	75,1	2,4
Mfr. non-metallic mineral products	26	1 884	2 429	6	56,3	0,2
Manufacture of basic metals	27	10 120	1 986	9	16,4	0,2
Mfr. metal prods. except machinery and equipment	28	23 431	75 284	59	76,3	7,6
Machinery in addition to below	29	31 075	152 869	95	83,1	15,3
Office machinery and computers	30	1 923	1 722	8	47,2	0,2
Electrical machines and articles	31	3 055	2 030	21	39,9	0,2
Radio, tv comm. equipt and app.	32	22 305	35 094	9	61,1	3,5
Precision instruments etc	33	4 641	25 212	37	84,5	2,5
Motor vehicles and trailers	34	43 068	75 158	22	63,6	7,5
Manufacture of other transport equipment	35	10 839	3 221	3	22,9	0,3
Other manufacturing industry	36-37	5 149	9 136	29	64,0	0,9
Construction	45	34 928	56 960	23	62,0	5,7
Services	50-99	227 209	408 875	696	64,3	41,0
Sales of motor vehicles and fuel	50	6 230	2 971	16	32,3	0,3
Wholesale and commission trade	51	32 630	27 145	249	45,4	2,7
Retail trade	52	20 802	35 382	33	63,0	3,6
Hotels and restaurants	55	819	285	6	25,8	0,0
Land transport	60	4 521	406	13	8,2	0,0
Sea and air transport	61-62	7 648	5 111	13	40,1	0,5
Travel agencies	63	1 370	688	20	33,4	0,1
Post and telecommunications	64	46 926	23 876	5	33,7	2,4
Financial intermediation	65-67	39 084	47 450	29	54,8	4,8
Real estate activities	70	578	968	14	62,6	0,1
Rental	71	71	175	7	71,1	0,0
Computer and related activities	72	20 325	14 918	108	42,3	1,5
Research and development	73	3 755	5 178	20	58,0	0,5
Other business activities	74	33 356	229 071	136	87,3	23,0
Other services	75-99	9 094	15 251	27	62,6	1,5
Total	00-99	489 847	996 171	1 199	67,0	100,0

Table 10 Number of employees in the 80 largest Swedish controlled manufacturing groups with affiliates abroad 2006 and 2005

Country of location	Number employees			Proportion of employees abroad	
	2006	2005	Change (%)	2006	2005
EU15 (excl. Sweden)	208 822	205 149	1,8	41,9	42,3
EU25 (excl. Sweden)	249 647	240 215	3,9	50,1	49,5
Belgium	10 532	10 875	-3,2	2,1	2,2
Cyprus	18	13	38,5	0,0	0,0
Denmark	14 501	13 750	5,5	2,9	2,8
Estonia	5 767	5 495	4,9	1,2	1,1
Finland	11 698	10 675	9,6	2,3	2,2
France	40 289	40 903	-1,5	8,1	8,4
Greece	1 060	1 085	-2,3	0,2	0,2
Ireland	2 466	2 299	7,3	0,5	0,5
Italy	26 751	25 977	3,0	5,4	5,4
Latvia	2 753	2 415	14,0	0,6	0,5
Lithuania	1 673	703	138,0	0,3	0,1
Luxembourg	391	214	82,7	0,1	0,0
Malta	669	731	-8,5	0,1	0,2
Netherlands	10 960	11 376	-3,7	2,2	2,3
Poland	15 222	11 335	34,3	3,1	2,3
Portugal	1 177	1 609	-26,8	0,2	0,3
Slovakia	489	1 065	-54,1	0,1	0,2
Slovenia	403	269	49,8	0,1	0,1
Spain	12 180	12 409	-1,8	2,4	2,6
UK	32 187	29 571	8,8	6,5	6,1
Czech Republic	7 111	6 848	3,8	1,4	1,4
Germany	38 706	38 666	0,1	7,8	8,0
Hungary	6 720	6 192	8,5	1,3	1,3
Austria	5 924	5 740	3,2	1,2	1,2
<i>Others OECD</i>					
Australia	9 939	11 142	-10,8	2,0	2,3
Japan	2 559	2 407	6,3	0,5	0,5
Canada	10 044	10 920	-8,0	2,0	2,3
Mexico	12 006	11 290	6,3	2,4	2,3
Norway	9 231	7 388	24,9	1,9	1,5
New Zealand	1 436	1 680	-14,5	0,3	0,3
Switzerland	4 856	4 312	12,6	1,0	0,9
South Korea	2 763	2 866	-3,6	0,6	0,6
Turkey	1 235	1 406	-12,2	0,2	0,3
USA	72 894	83 829	-13,0	14,6	17,3
OECD total (excl. Sweden)	365 327	367 829	-0,7	73,3	75,8
Europe	277 360	263 639	5,2	55,7	54,3
America	129 926	137 501	-5,5	26,1	28,3
Asia	64 085	58 784	9,0	12,9	12,1
Africa	9 807	9 598	2,2	2,0	2,0
Oceania	12 781	12 902	-0,9	2,6	2,7
Rest of the world	498 250	485 150	2,7	100,0	100,0
<i>Abroad Unspecified</i>	4 291	2 726	57,4	0,9	0,6
Sweden	165 181	164 360	0,5	-	-
Total	663 431	649 510	2,1	-	-

Table 11 Number of employees in the 20 largest Swedish controlled manufacturing groups with affiliates abroad 2006 and 2005.

Country of location	Number employees			Proportion of employees abroad	
	2006	2005	Change (%)	2006	2005
EU15 (excl. Sweden)	179 985	179 320	0,4	42,0	42,4
EU25 (excl. Sweden)	206 059	201 028	2,5	48,1	47,5
Belgium	9 320	9 757	-4,5	2,2	2,3
Cyprus	18	13	38,5	0,0	0,0
Denmark	10 196	8 784	16,1	2,4	2,1
Estonia	499	432	15,5	0,1	0,1
Finland	8 338	7 478	11,5	1,9	1,8
France	35 796	36 571	-2,1	8,4	8,6
Greece	1 052	1 079	-2,5	0,2	0,3
Ireland	2 343	2 179	7,5	0,5	0,5
Italy	25 361	25 273	0,3	5,9	6,0
Latvia	1 726	1 503	14,8	0,4	0,4
Lithuania	792	443	78,8	0,2	0,1
Luxembourg	51	61	-16,4	0,0	0,0
Malta	669	731	-8,5	0,2	0,2
Netherlands	9 682	10 029	-3,5	2,3	2,4
Poland	11 218	7 542	48,7	2,6	1,8
Portugal	930	1 549	-40,0	0,2	0,4
Slovakia	469	943	-50,3	0,1	0,2
Slovenia	288	193	49,2	0,1	0,0
Spain	11 248	11 620	-3,2	2,6	2,7
UK	27 251	26 084	4,5	6,4	6,2
Czeck Republic	4 650	4 661	-0,2	1,1	1,1
Germany	33 245	33 867	-1,8	7,8	8,0
Hungary	5 745	5 247	9,5	1,3	1,2
Austria	5 172	4 989	3,7	1,2	1,2
<i>Others OECD</i>					
Australia	9 375	10 580	-11,4	2,2	2,5
Japan	2 416	2 313	4,5	0,6	0,5
Canada	9 324	10 196	-8,6	2,2	2,4
Mexico	10 886	10 524	3,4	2,5	2,5
Norway	6 906	5 092	35,6	1,6	1,2
New Zealand	1 429	1 676	-14,7	0,3	0,4
Switzerland	4 491	3 837	17,0	1,0	0,9
South Korea	2 706	2 799	-3,3	0,6	0,7
Turkey	1 177	1 381	-14,8	0,3	0,3
USA	64 903	75 680	-14,2	15,2	17,9
OECD total (excl. Sweden)	315 680	321 791	-1,9	73,7	76,1
Europe	229 647	220 344	4,2	53,6	52,1
America	119 429	127 377	-6,2	27,9	30,1
Asia	55 538	53 108	4,6	13,0	12,6
Africa	8 104	8 029	0,9	1,9	1,9
Oceania	12 210	12 336	-1,0	2,9	2,9
Rest of the world	428 284	422 823	1,3	100,0	100,0
<i>Abroad Unspecified</i>	3 356	1 629	106,0	0,8	0,4
Sweden	107 402	106 766	0,6	-	-
Total	535 686	529 589	1,2	-	-

Table 12 Number of employees in the 40 largest Swedish controlled service groups with affiliates abroad 2006 and 2005.

Country of location	Number employees			Proportion of employees abroad	
	2006	2005	Change (%)	2006	2005
EU15 (excl. Sweden)	171 218	179 683	-4,7	45,8	48,0
EU25 (excl. Sweden)	205 879	209 633	-1,8	55,0	56,0
Belgium	6 836	5 820	17,5	1,8	1,6
Denmark	19 118	20 502	-6,8	5,1	5,5
Estonia	8 471	7 595	11,5	2,3	2,0
Finland	24 042	27 140	-11,4	6,4	7,3
France	24 925	27 752	-10,2	6,7	7,4
Greece	27	26	3,8	0,0	0,0
Ireland	408	427	-4,4	0,1	0,1
Italy	1 020	870	17,2	0,3	0,2
Latvia	5 358	4 194	27,8	1,4	1,1
Lithuania	8 701	8 112	7,3	2,3	2,2
Luxembourg	883	813	8,6	0,2	0,2
Malta	22	10	120,0	0,0	0,0
Netherlands	7 742	7 132	8,6	2,1	1,9
Poland	8 915	7 737	15,2	2,4	2,1
Portugal	6 974	6 908	1,0	1,9	1,8
Slovakia	46	35	31,4	0,0	0,0
Slovenia	102	85	20,0	0,0	0,0
Spain	25 898	27 783	-6,8	6,9	7,4
UK	18 784	23 022	-18,4	5,0	6,2
Czech Republic	2 220	1 796	23,6	0,6	0,5
Germany	31 357	28 424	10,3	8,4	7,6
Hungary	826	386	114,0	0,2	0,1
Austria	3 204	3 064	4,6	0,9	0,8
<i>Others OECD</i>					
Australia	239	542	-55,9	0,1	0,1
Japan	1 154	1 298	-11,1	0,3	0,3
Canada	7 603	6 793	11,9	2,0	1,8
Mexico	3 879	3 461	12,1	1,0	0,9
Norway	25 067	23 545	6,5	6,7	6,3
New Zealand	0	9	0,0	0,0	0,0
Switzerland	2 814	2 844	-1,1	0,8	0,8
South Korea	154	129	19,4	0,0	0,0
Turkey	2 824	0	0,0	0,8	
USA	102 085	105 829	-3,5	27,3	28,3
OECD total (excl. Sweden)	329 044	334 087	-1,5	87,9	89,3
Europe	241 126	242 225	-0,5	64,4	64,7
America	118 811	121 006	-1,8	31,8	32,3
Asia	9 679	4 887	98,1	2,6	1,3
Africa	77	37	108,1	0,0	0,0
Oceania	239	551	-56,6	0,1	0,1
Rest of the world	374 188	374 285	0,0	100,0	100,0
<i>Abroad Unspecified</i>	4256	5579	-23,7	1,1	1,5
Sweden	145 775	151 388	-3,7	-	-
Total	519 963	525 673	-1,1	-	-

Table 13a Export of goods from all Swedish controlled groups with affiliates abroad 2006 (SEK million).

Country	All Groups	Sweden's total exports (%)	groups	Service groups
EU15 (excl. Sweden)	208 936	36,4	176 112	16 534
EU25 (excl. Sweden)	230 882	36,6	195 574	18 359
Belgium	20 699	42,0	19 356	540
Cyprus	271	53,4	267	4
Denmark	18 436	24,6	13 610	4 708
Estonia	2 184	25,6	1 713	468
Finland	19 414	29,9	12 383	4 315
France	17 984	33,9	16 938	624
Greece	2 323	41,6	1 785	539
Ireland	2 700	44,1	2 525	83
Italy	16 204	44,7	15 756	360
Latvia	1 571	46,5	1 274	254
Lithuania	1 802	45,8	1 556	235
Luxembourg	153	21,7	134	19
Malta	49	28,2	48	2
Netherlands	26 636	52,1	24 317	771
Poland	8 798	40,3	8 035	549
Portugal	2 323	43,5	2 266	57
Slovakia	751	37,4	687	63
Slovenia	668	51,8	603	64
Spain	14 235	42,8	12 667	1 041
UK	28 777	37,4	22 922	896
Czech Republic	3 477	53,4	3 188	114
Germany	34 790	32,8	27 318	2 464
Hungary	2 375	26,1	2 092	73
Austria	4 260	41,8	4 134	117
<i>Others OECD</i>				
Australia	7 821	54,4	7 745	74
Iceland	621	16,7	521	93
Japan	6 304	37,4	6 036	252
Canada	3 269	28,6	3 031	208
Mexico	1 775	34,5	1 762	8
Norway	24 400	24,6	16 702	6 540
New Zealand	532	46,0	514	15
Switzerland	3 291	34,1	2 837	251
South Korea	2 612	42,8	2 433	166
Turkey	5 130	53,8	4 006	51
USA	30 051	29,8	28 212	1 771
OECD total (excl. Sweden)	316 688	34,8	269 375	27 789
Europe	278 884	35,4	233 005	26 435
America	44 479	33,1	42 287	2 079
Asia	56 797	51,6	53 020	2 168
Africa	15 598	68,6	14 329	203
Oceania	8 438	53,6	8 343	91
Total exports	404 293	37,7	350 983	31 073

Notes: Industry is defined in accordance with SNI 2002; manufacturing industry corresponds to the main classifications 15-37 and the service sector to 50-99. The column "All groups" includes all groups irrespective of industry. Total exports also include exports where country data is not specified.

Table 13b Imports of goods to all Swedish controlled groups with affiliates abroad 2006 (SEK million).

Country	All groups	Proportion of Sweden's total imports (%)	Manufacturing groups	Service groups
EU15 (excl. Sweden)	111 442	19,5	72 915	31 346
EU25 (excl. Sweden)	127 879	20,2	86 228	34 042
Belgium	6 982	18,1	5 479	1 380
Cyprus	13	5,6	13	0
Denmark	10 005	11,6	5 514	4 291
Estonia	3 505	49,8	3 246	233
Finland	11 284	21,3	6 434	2 346
France	7 212	16,7	5 065	1 832
Greece	262	19,9	53	175
Ireland	2 349	19,5	1 544	771
Italy	7 380	24,9	4 642	2 611
Latvia	1 007	30,3	661	204
Lithuania	872	13,7	542	325
Luxembourg	965	19,5	685	276
Malta	23	25,5	22	0
Netherlands	12 365	21,8	7 156	5 128
Poland	7 506	30,8	6 156	1 143
Portugal	1 187	38,5	309	333
Slovakia	426	14,4	294	132
Slovenia	473	30,3	428	44
Spain	2 490	17,9	1 254	1 032
UK	12 167	20,8	8 904	3 108
Czech Republic	1 340	13,6	1 020	277
Germany	34 663	21,4	24 364	7 517
Hungary	1 273	20,5	929	337
Austria	2 131	22,7	1 511	547
<i>Others OECD</i>				
Australia	1 910	66,7	1 683	34
Iceland	25	11,8	13	9
Japan	3 909	21,6	3 323	584
Canada	1 554	45,9	535	118
Mexico	218	43,1	197	19
Norway	7 960	9,9	6 307	1 408
New Zealand	95	28,0	88	7
Switzerland	2 086	22,4	1 482	533
South Korea	2 265	27,1	732	1 520
Turkey	1 961	26,3	393	1 294
USA	11 371	36,0	9 043	1 716
OECD total (excl. Sweden)	161 233	20,2	110 026	41 284
Europe	143 765	18,7	97 622	37 741
America	19 274	40,0	12 400	2 754
Asia	30 049	33,8	13 450	16 483
Africa	793	19,3	524	221
Oceania	2 041	62,6	1 806	41
Total imports	195 922	21,4	125 802	57 241

Notes: Industry is defined in accordance with SNI 2002; manufacturing industry as the main groups 15-37 and the service sector as 50-99. The column "All groups" includes all groups irrespective of industry.

The Swedish Institute for Growth Policy Studies (ITPS) is a Government Agency responsible for providing policy intelligence to strengthen growth policy in Sweden. ITPS primarily provides the Government Offices, Members of the Swedish Parliament, other state authorities and agencies with briefings based on statistical material, policy papers and key analyses. Business policy and regional development policy are areas given high priority.

Changes in policy should be based on:

- Statistic data and analyses of the structure and dynamics of industry – to obtain an up-to-date view of future challenges and opportunities.
- Evaluation of results and effects of policy measures and programmes – to provide benchmarks and learn from measures implemented earlier.
- Policy intelligence in order to look outwards and ahead – what issues are likely to come on the growth policy agenda in the future?

These represent the principal missions of ITPS.